



distinctly

abode



**We are truly passionate about what we do.**


The Abode team have an extensive knowledge of sinks, taps and the kitchen market. Our UK based product designers are dedicated to keeping abreast of the very latest trends in kitchen design, meaning we can bring you the perfect sink & tap pairing for the very latest kitchen furniture trends year after year.

Established in 2002, our thirst for design, innovation, quality and service remains just as strong today as it was on day one.

Keep up to date with the very latest product introductions, news and find a wealth of inspiration from our pages below;

 [www.abodedesigns.co.uk](http://www.abodedesigns.co.uk)  [Instagram.com/abode\\_home](https://www.instagram.com/abode_home)  [Pinterest.co.uk/AbodeDesigns](https://www.pinterest.co.uk/AbodeDesigns)

 [Facebook.com/abodehomeproducts](https://www.facebook.com/abodehomeproducts)  [Twitter.com/abodehome](https://www.twitter.com/abodehome)

 [https://www.youtube.com/channel/UC7D85OOhL8-F\\_ngwBTogdsA](https://www.youtube.com/channel/UC7D85OOhL8-F_ngwBTogdsA)



ABODE KITCHEN SINKS AND TAPS ARE CREATED FOR PEOPLE WHO WANT THE PERFECT BLEND OF DESIGN, PERFORMANCE AND SHEER QUALITY.

All Abode products are lovingly crafted and thoroughly tested in our factories prior to making the journey to the centre of your kitchen and daily life.

Buying Abode means complete peace of mind. We have strict quality standards, investing in the very best components and latest manufacturing techniques to ensure long-life performance. We are so confident in the quality of our products that they carry a comprehensive warranty. On top of that, our UK aftersales service team are dedicated in providing superior customer service should you ever need us.



Full details of our warranties can be found on our website;

[www.abodedesigns.co.uk/support/warranty](http://www.abodedesigns.co.uk/support/warranty)





# Kitchen Sinks



## CONTENTS

Stainless Steel Undermounts	14
Granite Undermounts	32
Ceramic Undermounts	40
Granite Insets	50
Ceramic Insets	68
Stainless Steel Insets	74
Taps	90

Scan to view  
Kitchen Sinks  
Price List



# Selecting a Sink

- 1 MATERIAL
- 2 TYPE
- 3 SIZE
- 4 STYLE
- 5 FEATURES



## Material

**STAINLESS STEEL:** Stainless Steel is a timeless material which remains a popular choice. It is often a perfect match to the kitchen appliances so provides a coordinated finishing touch. As well as the aesthetics, it is easy to maintain and is extremely durable. All Abode sinks are constructed from premium 304 grade stainless steel and are available in an array of designs.

- HYGIENIC
- EASY TO CLEAN
- HIGH HEAT RESISTANCE
- STAIN RESISTANT
- CORROSION RESISTANT
- PREMIUM GRADE STAINLESS STEEL

**GRANITE:** SiOForm® is a unique material solution engineered specially for our granite kitchen sink collection. The material is primarily made of pure and natural quartz, a material that is strong, resilient and extremely durable, making it an ideal addition for your kitchen. SiOForm® products have a uniform void-free structure and are resistant to dry temperatures up to 280°. Granite sinks are great for retaining water temperature, making it perfect for any busy kitchen environment. Our range consists of several unique designs in various shapes and sizes. Additionally, the Frost White, Grey Metallic and Black Metallic options add a premium and contemporary touch and create a striking focal point in your kitchen.

- HYGIENIC
- EASY TO CLEAN
- UNIFORM STRUCTURE
- HIGH CONTENT OF NATURAL MINERAL
- STAIN RESISTANT
- SCRATCH RESISTANT
- IMPACT RESISTANT
- THERMAL SHOCK RESISTANT
- SURFACE ABRASION RESISTANT

SiOForm® is available in the following colours:

- WHITE GRANITE
- FROST WHITE
- GREY METALLIC
- BLACK METALLIC
- BLACK GRANITE

**CERAMIC:** Our ceramic sinks are constructed from the finest grade fireclay and are hand finished for a premium quality finish. This traditional classic is available in undermount, apron front and inset options, providing an elegant finish every time. The glazing process ensures a long lasting and durable finish.

- HYGIENIC
- EASY TO CLEAN
- HIGH HEAT RESISTANCE
- STAIN RESISTANT
- CHEMICAL RESISTANT
- DURABLE AND LONG LASTING

# Sink types



**UNDERMOUNT:** An undermount sink is installed under the worktop for a seamless, premium finish. Undermount sinks will work with a wide variety of worktop surfaces. Why not try pairing yours with a solid surface or granite worktop? There are a large range of bowl sizes and configurations to choose from in this offer, providing ultimate versatility when it comes to usage requirements. The tap is often mounted on the worktop, adding to the premium, sleek look.



**INSET:** An inset sink sits on top of the worktop and can be installed in any material, including laminate. An inset sink will often have a drainer integrated for ease and durable functionality. The tap is usually mounted on the sink and often these designs have two tap holes so they are reversible, meaning the drainer can be positioned either left or right.

**APRON FRONT:** This range consists of our Belfast and Provincial products. They are installed under the worktop with the front face visible so require a base cabinet with a specific height to house them. Traditionally these products are ceramic, for a more contemporary/industrial style, opt for the stainless steel Belfast.

# Sink sizes



Across our comprehensive sink collection, we have several sink sizes available. In the initial planning stages, it is important to consider how the kitchen is to be used to determine which option is best suited to your lifestyle requirements.

How do you use your sink? What would make your daily tasks easier so you can focus on the more important things? for example; what typically needs to fit in the main bowl? Is a larger main bowl size needed? Would the addition of a half bowl be beneficial? Is a drainer required?

**EXAMPLES ARE AS FOLLOWS;**

- Single Half Bowl
- Single Bowl
- 1.5 Bowl
- Double Bowl
- Large & Extra Large Bowl options



# Style

The overall style of the kitchen will go a way to dictate the perfect sink and tap pairing. Bring colour into the kitchen with a granite sink and either a perfectly matched or contrasting tap pairing.

For example; an industrial style kitchen with dark colourways looks great with a stainless steel or granite sink plus a perfectly matched tap in stainless steel, black, or graphite. However, consider the finer details such as the handles or any key detailing on appliances/ accessories in the kitchen when selecting the perfect tap finish, it may be that a brass or copper tone is more suited to complement the kitchen overall.

# Sink features

LOOK OUT FOR THE FOLLOWING FEATURES ON SELECTED SINK RANGES



## FLUSH PLATE OVERFLOW

This removable overflow cover has the following benefits;

Removable for improved sink hygiene (easy clean)

Provides a sleek, premium finish

Constructed from solid stainless steel



## ORBIT WASTE

Provides a minimalist look, whilst removing unsightly debris from view

Constructed from stainless steel and rubberised plastic

Dishwasher safe, as well as being easy to empty



## TOP MOUNTED OVERFLOW

Allows for maximum bowl filling

Dispose of drinks even when the bowl is full

Applies to Londa and Neron ranges only

All Abode Sinks are supplied with pipework

Look out for the following symbols throughout this section:



**REVERSIBLE**  
Overflow or drainer can be positioned either left or right.



**2ND TAP HOLE FOR SWICH**

## STAINLESS STEEL UNDERMOUNTS

### **Understated simplicity**

It's not just the material that's versatile but the range of products in this offer.

We're confident you'll find the perfect solution from our stainless steel undermount collection. Whether you're looking for a small single bowl, one and a half bowl, large bowl or even an extra large bowl!

We also have ranges which allow you to create the undermount look without the expense of solid surface. Take a look at our R15 range which can be either undermounted or inset so worktop material doesn't restrict you from creating the look you desire.



Image shows the R15 1.5 Bowl and Tubist T in Brushed Nickel



## MATRIX R0

This elegant undermount option brings a sharp geometry to the kitchen, complementing popular appliance styling. These precision engineered pieces give a premium finish every time.

1mm durable 304 grade brushed stainless steel construction

Squared edges. Zero-radius construction

Deep bowls to accept larger cookware

Orbit wastes with easy empty, fold-back basket and pipework included

Easy clean flush-plate overflow



# MATRIX R0

Single half bowl



**AW5007**  
Stainless Steel

length 200mm  
width 440mm  
depth 155mm  
bowl 1 capacity 6.3L  
min base unit 450mm

**Undermount only**

Main bowl



**AW5008**  
Stainless Steel

length 380mm  
width 438mm  
depth 205mm  
bowl 1 capacity 21.2L  
min base unit 450mm

**Undermount only**

Large single main bowl



**AW5009**  
Stainless Steel

length 540mm  
width 440mm  
depth 205mm  
bowl 1 capacity 31.2L  
min base unit 600mm

**Undermount only**

1.5 bowl



**AW5010-2**  
Stainless Steel  
**right hand main bowl**

**AW5011-2**  
Stainless Steel  
**left hand main bowl**

length 556mm  
width 460mm  
depth 205mm  
bowl 1 capacity 21.2L  
min base unit 600mm

**Undermount only**

Double bowl



**AW5012-2**  
Stainless Steel

length 736mm  
width 460mm  
depth 205mm  
bowl 1 capacity 21.2L  
min base unit 800mm

**Undermount only**



Full specification documents can be found at [www.abodedesigns.co.uk](http://www.abodedesigns.co.uk)



Low profile inset installation

## MATRIX R15

Minimal and modern in design, maximal in versatility, the Matrix R15 is expertly crafted using the latest pressing technology in the highest quality stainless steel. Timeless in style, easy to maintain and extremely durable, this collection is both stylish and streamlined, blending contemporary design with practical versatility and will sit well in any busy kitchen. Keen cook or entertain often? You'll love the extra-large bowl that fits large pots, pans and trays with ease.

1mm durable 304 grade brushed stainless steel construction

Orbit wastes with easy empty, fold-back basket and pipework included

Minimal 15mm radius corners. Stylish yet still easy to clean

Deep bowls and good breadth of range

With easy clean flush-plate overflow



Undermount installation

Image shows the Matrix R15 Single Bowl and Prothia Slimline Monobloc Swan in Chrome

# MATRIX R15

Single bowl



**AW5121**  
Stainless Steel

length 380mm  
width 440mm  
depth 202mm  
bowl 1 capacity 18.5L  
min base unit 500mm

**Can be undermounted or inset**

Large single bowl



**AW5122**  
Stainless Steel

length 540mm  
width 440mm  
depth 205mm  
bowl 1 capacity 27.6L  
min base unit 600mm

**Can be undermounted or inset**

Extra large single bowl



**AW5128**  
Stainless Steel

length 750mm  
width 440mm  
depth 205mm  
bowl 1 capacity 43L  
min base unit 1000mm

**Can be undermounted or inset**

Double bowl



**AW5123**  
Stainless Steel

length 740mm  
width 440mm  
depth 202mm  
bowl 1 capacity 18.5L  
min base unit 800mm

**Can be undermounted or inset**

1.5 bowl



**AW5124**  
Stainless Steel  
**left hand main bowl**

**AW5126**  
Stainless Steel  
**right hand main bowl**

length 580mm  
width 440mm  
depth 202mm  
bowl 1 capacity 18.5L  
min base unit 800mm

**Can be undermounted or inset**



1.5 large bowl



**AW5125**  
Stainless Steel  
**left hand main bowl**

**AW5127**  
Stainless Steel  
**right hand main bowl**

length 740mm  
width 440mm  
depth 205mm  
bowl 1 capacity 27.6L  
min base unit 800mm

**Can be undermounted or inset**



Full specification documents can be found at [www.abodedesigns.co.uk](http://www.abodedesigns.co.uk)

## MATRIX R50

The Matrix R50 range is designed to enable a combination approach to your sink layout or for a single product installation. With smooth contoured bowl edges for a sleek finish.

0.7mm 304 grade polished stainless steel construction

50mm radius corners for ease of cleaning

Orbit wastes with easy empty, fold-back basket and pipework included

Six bowl sizes to choose from



Image shows the R50 1.5 Bowl and Prothia Quad Spout in Matt Black

# MATRIX R50

Single half bowl



**AW5013**  
Stainless Steel

length 168mm  
width 318mm  
depth 155mm  
bowl 1 capacity 4.4L  
min base unit 450mm  
**Undermount only**

Main bowl



**AW5014**  
Stainless Steel

length 370mm  
width 430mm  
depth 205mm  
bowl 1 capacity 20.3L  
min base unit 450mm  
**Undermount only**

Large single bowl



**AW5015**  
Stainless Steel

length 535mm  
width 435mm  
depth 205mm  
bowl 1 capacity 37.0L  
min base unit 600mm  
**Undermount only**

1.5 bowl



**AW5017**  
Stainless Steel  
**left hand main bowl**

**AW5016**  
Stainless Steel  
**right hand main bowl**

length 572mm  
width 450mm  
depth 205mm  
bowl 1 capacity 20.3L  
min base unit 600mm  
**Undermount only**



Full specification documents can be found at [www.abodedesigns.co.uk](http://www.abodedesigns.co.uk)

## STAINLESS STEEL BELFAST

A contemporary twist on a classic to create a true showstopper that adds a touch of modernism to any kitchen. Its large capacity bowl is ideally suited to keen cooks and aspiring chefs as large pots, pans and trays fit in with ease. Why not pair this sink with one of our professional or Hex taps to add a true industrial edge to your kitchen?

### Single bowl

1.2mm thick 304 grade brushed stainless steel

Orbit waste with easy empty, fold-back basket and pipework included

90mm waste hole to accept waste disposal unit

Flush-plate overflow for a sleek contemporary look

Sit on installation

Fits 600mm Belfast base units



### **AW5135**

Stainless Steel

length 600mm  
width 465mm  
depth 254mm  
bowl 1 capacity 38.1L  
min base unit 600mm

Full specification documents can be found at [www.abodedesigns.co.uk](http://www.abodedesigns.co.uk)



Image shows the Stainless Steel Belfast and HEX Professional

## STUDIO COMPACT

The Studio was designed for compact kitchens and grander installations alike. In smaller kitchens maximise worktop space thanks to Studio's compact yet functional proportions, or install as a practical preparation sink, ideally suited for steaming hot water taps. Three accessories are supplied with the Studio sink, adding useful functionality where space is limited.

### Two installation options available:

600mm cabinet requirement in horizontal mounting position (450mm in vertical)

Low profile inset or undermount installation

1mm 304 grade brushed stainless steel

Small radius bowl corners for contemporary style with effortless cleaning

Orbit waste with easy empty, fold-back basket and pipework included

Flush-plate overflow for a sleek contemporary look

### Single bowl



### AW5134

Stainless Steel

length 500mm

width 300mm

depth 205mm

bowl 1 capacity 16.9L

min base unit 450mm (vertical mounting)

600mm (horizontal mounting)



Comes complete with 3 practical accessories; strainer, colander and mini bowl in the pack

Full specification documents can be found at [www.abodedesigns.co.uk](http://www.abodedesigns.co.uk)





## GRANITE UNDERMOUNTS

Find the perfect match for your décor with our range of granite sinks. Available in three colours; black, grey and white there is sure to be something to suit your requirements. Our black and grey options have a metallic fleck to ensure a premium finish.

For details on the benefits of our SioForm® granite composition see page 09.



Image shows the Matrix GR15 2 Bowl In Black Metallic Granite and Virtue Nero Pull Out

## MATRIX GR15

Beautifully versatile. The GR15 collection has a smooth contoured body offering a seamless finish. Choose from four different bowl sizes and three different granite colours, all of which have two installation options.

Pure and natural quartz construction for ultimate durability

Can be undermounted or inset in worktops

Resistant to temperatures up to 280°C, surface abrasion and scratches. Long-lasting quality

Smooth surface finish

Softened square edges for a crisp look whilst remaining easy to clean

Orbit wastes with easy empty, fold-back basket and pipework included



Image shows the Matrix GR15 1.5 Bowl in Grey Metallic Granite and Genjo Semi-Professional Monobloc

# MATRIX GR15

Single bowl



**AW3124**  
Black Metallic Granite

**AW3125**  
White Granite

**AW3133**  
Grey Metallic Granite

length 460mm  
width 460mm  
depth 220mm  
bowl 1 capacity 20.8L  
min base unit 500mm

**Can be undermounted  
or inset**

Large main bowl



**AW3126**  
Black Metallic Granite

**AW3127**  
White Granite

**AW3134**  
Grey Metallic Granite

length 560mm  
width 460mm  
depth 225mm  
bowl 1 capacity 26L  
min base unit 600mm

**Can be undermounted  
or inset**

1.5 bowl  
[reversible\*]



**AW3128**  
Black Metallic Granite

**AW3129**  
White Granite

**AW3135**  
Grey Metallic Granite

length 560mm  
width 460mm  
depth 220mm  
bowl 1 capacity 14L  
min base unit 600mm

**Can be undermounted  
or inset**

Double bowl



**AW3166**  
Black Metallic Granite

**AW3165**  
Grey Metallic Granite

length 758mm  
width 460mm  
depth 220mm  
bowl 1 capacity 16.8L  
min base unit 800mm

**Undermount only**

Full specification documents can be found at [www.abodedesigns.co.uk](http://www.abodedesigns.co.uk)

\* Handing as shown (left hand main bowl) sets waste slightly towards the back of sink cabinet. Right hand main bowl installations are valid, but wastes will be offset slightly forward. For more info see full specification sheet on our website.



## DENTON

Perfect for compact kitchens and grander installations alike. In smaller spaces maximise worktop area thanks to Denton's small proportions or install as a practical preparation sink in a kitchen island unit as an addition to the main kitchen sink.

### Single bowl

Durable and hygienic composite granite construction with high temperature resistance (280°C)

Compact design ideally suited for smaller installations or perfect as a second sink

Undermount installation

600mm cabinet requirement in horizontal mounting position or 450mm in the vertical position

Designed with small radius corners for a sharp look whilst remaining easy to clean

Orbit waste with easy empty, fold-back basket and pipework included



#### AW3167

Grey Metallic Granite

length 500mm  
width 363mm  
depth 198mm  
bowl 1 capacity 12.1L  
min base unit 450mm or 600mm

Full specification documents can be found at [www.abodedesigns.co.uk](http://www.abodedesigns.co.uk)



## CERAMIC UNDERMOUNTS

Ceramic sinks are often perceived purely as a traditional option for a traditional setting, however this range of products is extremely adaptable. Try pairing with a contemporary tap in the finish of the moment for a striking effect.



Image shows the Belfast and ProTrad 3IN1 in Brushed Nickel.



## BELFAST

A true classic! The Belfast sink is a staple when it comes to a traditional kitchen, not only does it sit beautifully in any kitchen setting, but it has a large bowl capacity making it perfect for the busy household or keen cook. Try mixing this classic sink with a contemporary tap to inject a modern twist, suitably paired with the other finer details of your kitchen design.

Large bowl  
[reversible]



- Durable finest grade fireclay construction throughout
- High capacity bowl volume to accept larger cookware
- 60mm basket strainer waste supplied
- Smooth, contoured integral weir overflow built-in

**AW1022**  
White Ceramic



length 595mm  
width 455mm  
depth 275mm  
bowl 1 capacity 42.3L  
min base unit 600mm

Full specification documents can be found at [www.abodedesigns.co.uk](http://www.abodedesigns.co.uk)

## PROVINCIAL

Timeless in design and natural in form, the Provincial captures the true essence of British sense of style, delivering elegance, beauty, and functionality as standard. The larger bowl capacity maximises kitchen workflow and takes larger pots, pans, and trays with ease, making it the perfect addition for busy households and keen cooks.

Large single bowl



### **AW1020**

White Ceramic

length 795mm  
width 460mm  
depth 220mm  
bowl 1 capacity 37.7L  
min base unit 800mm

Large double bowl



### **AW1021**

White Ceramic

length 794mm  
width 490mm  
depth 220mm  
bowl 1 capacity 20.1L  
min base unit 800mm

Durable finest grade fireclay construction throughout

High capacity bowl volume to accept larger cookware

90mm basket strainer waste(s) supplied

Punched tap hole on the 2 bowl version

Worktop can be cut to cover tap deck (as shown right)

Full specification documents can be found at [www.abodedesigns.co.uk](http://www.abodedesigns.co.uk)



Image shows the Provincial Large Double Bowl and Astbury Bridge with Handspray in Chrome (see Classically Abode brochure)

## SANDON

This versatile range offers the possibility of seamless integration with undermount installation or simplicity with inset installation. Available in a variety of bowl sizes this collection will sit beautifully in traditional or contemporary settings alike.

Durable finest grade fireclay construction throughout

Orbit wastes with easy empty, fold-back basket and pipework included

Modern flush-plate overflow

Wide variety of design options





## SANDON



Image shows the Sandon 1.5 Bowl and Prothia Slimline Monobloc Quad Spout in Brushed Nickel

### Single bowl



**AW1030**  
White Ceramic

length 460mm  
width 460mm  
depth 220mm  
bowl 1 capacity 19.5L  
min base unit 500mm [if inset],  
600mm [if undermounted]

**Can be undermounted or inset**

### Large single bowl



**AW1031**  
White Ceramic

length 595mm  
width 460mm  
depth 220mm  
bowl 1 capacity 26.3L  
min base unit 600mm [if inset],  
800mm [if undermounted]

**Can be undermounted or inset**

### 1.5 bowl [with tap gap]



**AW1032**  
White Ceramic

length 595mm  
width 520mm  
depth 220mm  
bowl 1 capacity 26.5L  
min base unit 600mm [if inset],  
800mm [if undermounted]

**Can be undermounted or inset**

### 1.5 bowl



**AW1033**  
White Ceramic

length 595mm  
width 460mm  
depth 220mm  
bowl 1 capacity 21.5L  
min base unit 600mm [if inset],  
800mm [if undermounted]

**Can be undermounted or inset**

Shown with intended, left-hand main bowl  
handing. N.B. overflow will be on opposite  
side if mounting right-hand-main bowl

Full specification documents can be found at [www.abodedesigns.co.uk](http://www.abodedesigns.co.uk)

## GRANITE INSETS

Our range of inset granite sinks are truly distinctive. There are models with curvaceous contours and drainers with real design flair. These sinks don't only have big personality, they have true functionality. With 5 colours available across the range and all models constructed from our SiOForm® material, these sinks are as durable as they are striking.



Image shows the Zero 1.0 Bowl in Black Metallic Granite and Pico Monobloc in Matt Black

## ASPEKT

The curvaceous contours of the Aspekt make this sink a truly showstopping piece in any kitchen. The way the drainer flows down into the main bowl is a thing of elegance, all contrasted with square edges for a sharp and striking finish.

Single bowl and drainer  
[reversible]



**AW3001**  
Black Metallic Granite  

**AW3101**  
White Granite

length 716mm  
width 540mm  
depth 205mm  
bowl | capacity 10.46L  
min base unit 450mm

1.5 bowl and drainer  
[reversible]



**AW3002**  
Black Metallic Granite  

**AW3102**  
White Granite

length 950mm  
width 540mm  
depth 205mm  
bowl | capacity 9.17L  
min base unit 600mm



The black option features a discreet metallic fleck adds a premium finish to your kitchen. The white offers a pure, natural finish that will provide the perfect finishing touch in most interiors

Orbit wastes with easy empty fold-back basket and pipework supplied

Full specification documents can be found at [www.abodedesigns.co.uk](http://www.abodedesigns.co.uk)



## DUNE

Taking its name from the signature drainer design, mimicking the soft peaks that are formed across sand dunes. The Abode Dune is truly natural and organic in form, a soft silhouette with rounded corners that follow through into the bowl and styling allow for a striking yet functional focal point in any kitchen.

Hidden Orbit overflow design

Orbit wastes with easy empty fold-back basket and pipework supplied



# DUNE

Single bowl and drainer  
[reversible]



**AW3140**  
Black Granite



**AW3141**  
Frost White Granite

**AW3144**  
Grey Metallic Granite

length 1000mm  
width 500mm  
depth 217mm  
bowl 1 capacity 22.9L  
min base unit 600mm

1.5 bowl and drainer  
[reversible]



**AW3142**  
Black Granite



**AW3143**  
Frost White Granite

**AW3145**  
Grey Metallic Granite

length 1000mm  
width 500mm  
depth 217mm  
bowl 1 capacity 24.8L  
min base unit 600mm

Full specification documents can be found at [www.abodedesigns.co.uk](http://www.abodedesigns.co.uk)



Image shows the Dune Single Bowl in Frost White Granite

# ORIEL

This subtle design is perfectly formed with smooth, organic lines framing the deep bowl. Both styles can be perfectly complemented by an array of tap designs and finishes to create a striking finish.

Single bowl and drainer  
[reversible]



**AW3112**  
Black Granite



**AW3114**  
Frost White Granite

length 780mm  
width 480mm  
depth 200mm  
bowl 1 capacity 16L  
min base unit 450mm

1.5 bowl and drainer  
[reversible]



**AW3113**  
Black Granite



**AW3115**  
Frost White Granite

length 950mm  
width 480mm  
depth 200mm  
bowl 1 capacity 16L  
min base unit 600mm

Reversible drainer position for  
maximum flexibility

90mm stainless steel basket strainer  
waste(s) supplied

Pipework supplied



Image shows the Oriel 1.5 Bowl in Black Granite and Pico Monobloc in Matt Black

Full specification documents can be found at [www.abodedesigns.co.uk](http://www.abodedesigns.co.uk)

## XCITE

Strong geometric design with sharp edging and a defined straight drainer pattern is the back bone to the contemporary family. The bowls feature softened square edges for a defined look whilst still being easy to clean.

Reversible drainer position for maximum flexibility

90mm stainless steel basket strainer waste(s) supplied

Pipework supplied



Image shows the Xcite Single Bowl in Grey Metallic Granite and Pico Monobloc in Brushed Nickel

# XCITE

Single bowl and drainer  
[reversible]



**AW3168**  
Black Metallic Granite



**AW3120**  
Frost White Granite

**AW3161**  
Grey Metallic Granite

length 780mm  
width 500mm  
depth 190mm  
bowl 1 capacity 16L  
min base unit 450mm

1.5 bowl and drainer  
[reversible]



**AW3169**  
Black Metallic Granite



**AW3121**  
Frost White Granite

**AW3162**  
Grey Metallic Granite

length 1000mm  
width 500mm  
depth 200mm  
bowl 1 capacity 16L  
min base unit 600mm



Image shows the Xcite Single Bowl in Black Metallic Granite and Althia Single Lever in Brushed Brass

Full specification documents can be found at [www.abodedesigns.co.uk](http://www.abodedesigns.co.uk)



## ZERO

Oozing with style and overflowing with functionality, the Abode Zero is as versatile as it is visually exciting. Expertly crafted from our SioForm quartz blend that is as durable as it is striking, easy to clean and resistant to temperatures up to 280°C. With softened, squared edges, streamlined design and generous bowl depth, the Abode Zero is a thing of true design excellence.

Hidden Orbit overflow design

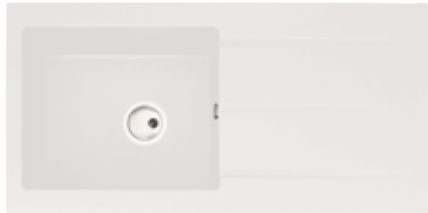
Orbit wastes with easy empty fold-back basket and pipework supplied

With part formed tap holes to be drilled to your preference on installation



# ZERO

Single bowl and drainer  
[reversible]



**AW3007**  
Black Metallic Granite



**AW3107**  
White Granite

**AW3163**  
Grey Metallic Granite

length 1000mm  
width 500mm  
depth 220mm  
bowl 1 capacity 25.4L  
min base unit 600mm

1.5 bowl and drainer  
[reversible]



**AW3006**  
Black Metallic Granite

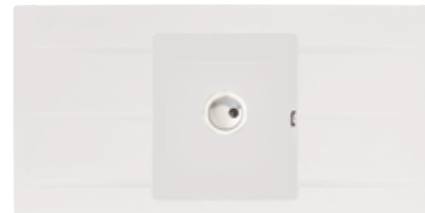


**AW3106**  
White Granite

**AW3164**  
Grey Metallic Granite

length 1000mm  
width 500mm  
depth 220mm  
bowl 1 capacity 29.4L  
min base unit 600mm

Single bowl and double drainer  
[not handed]



**AW3008**  
Black Metallic Granite



**AW3108**  
White Granite

length 1000mm  
width 500mm  
depth 220mm  
bowl 1 capacity 19.3L  
min base unit 450mm

1.5 bowl  
[reversible]



**AW3005**  
Black Metallic Granite



**AW3105**  
White Granite

length 600mm  
width 500mm  
depth 220mm  
bowl 1 capacity 29.4L  
min base unit 600mm

Full specification documents can be found at [www.abodedesigns.co.uk](http://www.abodedesigns.co.uk)

## CERAMIC INSETS

Traditional materials are matched with contemporary designs to create a truly modern and practical offering. This hard-wearing material is the perfect choice for the busy kitchen, it will stand the test of time whilst providing a striking focal point with a perfectly paired tap.



# ACTON

Traditional material perfectly blended with contemporary design influences makes the Acton the perfect option for those looking to merge the two elements.

Durable finest grade fireclay construction throughout

High capacity bowl volume to accept larger cookware. Maximum main bowl filling due to non-sealing overflow (1.5 bowl only)

90mm basket strainer waste(s) and pipework supplied

Easy clean bowl curves



Image shows the Acton 1.5 Bowl and Gosford Aquifer in Chrome

Single bowl and drainer  
[reversible]



**AW1040**  
White Ceramic



length 1000mm  
width 500mm  
depth 210mm  
bowl 1 capacity 28L  
min base unit 600mm

1.5 bowl and drainer  
[reversible]



**AW1041**  
White Ceramic



length 1000mm  
width 500mm  
depth 210mm  
bowl 1 capacity 21.5L  
min base unit 600mm

Full specification documents can be found at  
[www.abodedesigns.co.uk](http://www.abodedesigns.co.uk)

# MILFORD

The gentle contours of the Milford are in keeping with its true classic styling to ensure an elegant and traditional finish.

Single bowl and drainer  
[reversible]



**AWI042**  
White Ceramic



length 860mm  
width 500mm  
depth 220mm  
bowl 1 capacity 14.44L  
min base unit 450mm

1.5 bowl and drainer  
[reversible]



**AWI043**  
White Ceramic



length 1000mm  
width 500mm  
depth 220mm  
bowl 1 capacity 13.5L  
min base unit 600mm

Durable finest grade fireclay construction throughout

Option of a compact one bowl, designed to complement smaller kitchens or a practical one and a half bowl

Easy clean bowl curves

90mm basket strainer waste(s) and pipework supplied

Free flowing 60mm waste on half bowl of AWI043 for overflow compliance



Swich Round in Chrome  
(sold separately)

Full specification documents can be found at [www.abodedesigns.co.uk](http://www.abodedesigns.co.uk)



## STAINLESS STEEL INSETS

Abode have designed and manufactured a large collection of stylish 304 grade stainless steel inset sinks with features throughout. Whether you're looking for a flush fit installation, distinctive drainer, large bowl size, top mounted drainer or sleek simplicity, you'll find a solution in this collection.



Image shows the Neron Single Bowl, Althia Single Lever in Chrome and Swich Round in Chrome

# CONNEXT

With generous bowl sizing and a distinctive drainer pattern, the Connekt sink family offers practicality as well as contemporary styling.



Image shows the Connekt Single Bowl and Althia Pull Out in Brushed Nickel

Single bowl and drainer  
[reversible]



**AW5056**  
Stainless Steel



length 860mm  
width 500mm  
depth 175mm  
bowl 1 capacity 16L  
min base unit 450mm

1.5 bowl and drainer  
[reversible]



**AW5057**  
Stainless Steel



length 1000mm  
width 500mm  
depth 195mm  
bowl 1 capacity 18.9L  
min base unit 600mm

Double bowl and drainer  
[reversible]



**AW5060**  
Stainless Steel



length 1160mm  
width 500mm  
depth 195mm  
bowl 1 capacity 18.9L  
min base unit 800mm

0.8mm durable 304 grade brushed stainless steel construction

Orbit wastes with easy empty fold-back basket and pipework supplied

The unique two bowl option is ideal for use in the utility room to make those tedious chores that little bit simpler

Unbrushed steel finish

Full specification documents can be found at [www.abodedesigns.co.uk](http://www.abodedesigns.co.uk)

# IXIS

Sleek and streamlined, blending contemporary shapes with practical versatility and a distinctive drainer, the Ixis injects both design and flair into any modern kitchen.

Single compact bowl and drainer  
[reversible]



**AW5101**  
Stainless Steel



length 860mm  
width 500mm  
depth 172mm  
bowl 1 capacity 16.8L  
min base unit 450mm

Single large bowl and drainer  
[reversible]



**AW5102**  
Stainless Steel



length 1000mm  
width 500mm  
depth 180mm  
bowl 1 capacity 27.4L  
min base unit 600mm

1.5 bowl and drainer  
[reversible]



**AW5103**  
Stainless Steel



length 1000mm  
width 500mm  
depth 173mm  
bowl 1 capacity 16.8L  
min base unit 600mm

0.8mm durable 304 grade brushed stainless steel construction

Orbit wastes with easy empty fold-back basket and pipework supplied

Brushed steel finish

Full specification documents can be found at  
[www.abodedesigns.co.uk](http://www.abodedesigns.co.uk)



Image shows the Ixis 1.5 Bowl and Quantic Monobloc in Chrome





## MIKRO

A classically styled sink with a geometric detailed drainer pattern and clean, crisp lines throughout. A wonderfully versatile design that perfectly pairs with an array of Abode mixer taps, injecting both fashion and functionality into either your kitchen or utility.

Single bowl and drainer  
[reversible]



**AW5062**  
Stainless Steel

length 860mm  
width 500mm  
depth 187mm  
bowl 1 capacity 13.5L  
min base unit 450mm

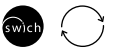


1.5 bowl and drainer  
[reversible]



**AW5061**  
Stainless Steel

length 1000mm  
width 500mm  
depth 187mm  
bowl 1 capacity 13.7L  
min base unit 600mm



0.7mm durable 304 grade brushed stainless steel construction

90mm basket strainer waste(s) and pipework supplied

Unbrushed steel finish

Full specification documents can be found at [www.abodedesigns.co.uk](http://www.abodedesigns.co.uk)

## NERON

A sleek design with linear influences and true practicality at heart. The single bowl designs have a top mounted flush-plate overflow next to the drainer so if the bowl is full you can still pour away drinks if needed. You also have the allowance of optimum bowl filling for cleaning larger items.

0.7mm durable 304 grade brushed stainless steel construction

Orbit wastes with easy empty fold-back basket and pipework supplied

Flush-plate overflow integrated beside the drainer on one bowl options and side mounted in the 1.5 bowl design

High bowl capacity of up to 36.2L

Brushed steel finish



Image shows the Neron Single Bowl, Althia Single Lever in Chrome and Switch Round in Chrome



## NERON

Single compact bowl and drainer  
[reversible]



**AW5111**  
Stainless Steel



length 860mm  
width 500mm  
depth 220mm  
bowl 1 capacity 27.3L  
min base unit 500mm

Large single bowl and drainer  
[reversible]



**AW5112**  
Stainless Steel



length 1000mm  
width 500mm  
depth 219mm  
bowl 1 capacity 36.2L  
min base unit 600mm

1.5 bowl and drainer  
[reversible]



**AW5113**  
Stainless Steel



length 1000mm  
width 500mm  
depth 218mm  
bowl 1 capacity 19.1L  
min base unit 600mm

Full specification documents can be found at [www.abodedesigns.co.uk](http://www.abodedesigns.co.uk)

# TRYDENT

A simple yet classic design that is contemporary in style yet beautifully timeless. The distinctive drainer pattern, soft angles and unbrushed steel finish allow the Trydent to sit equally as at home in both modern and traditionally styled interiors alike.

Single bowl and drainer  
[reversible]



**AW5054**  
Stainless Steel



length 860mm  
width 500mm  
depth 175mm  
bowl 1 capacity 15.1L  
min base unit 450mm

1.5 bowl and drainer  
[reversible]



**AW5055**  
Stainless Steel



length 1000mm  
width 500mm  
depth 175mm  
bowl 1 capacity 15.1L  
min base unit 600mm

0.6mm durable 304 grade brushed stainless steel construction

90mm basket strainer waste(s) and pipework supplied

Distinctive drainer pattern

Unbrushed steel finish

Full specification documents can be found at [www.abodedesigns.co.uk](http://www.abodedesigns.co.uk)



Image shows the Trydent 1.5 Bowl and Nexa Monobloc in Chrome

# VERVE

The tight corners and sleek drainer give Verve its premium, contemporary appearance. With its generous deep bowl sizes, this collection of handmade sinks is as practical as it is stylish.

Single bowl and drainer  
[reversible]



**AW5136**  
Stainless Steel



length 1000mm  
width 530mm  
depth 190mm  
bowl 1 capacity 24.8L  
min base unit 600mm

1.5 bowl and drainer  
[reversible]



**AW5137**  
Stainless Steel



length 1000mm  
width 530mm  
depth 190mm  
bowl 1 capacity 19.3L  
min base unit 600mm

Durable and resilient 304 stainless steel with 1mm construction

Solid tap deck for sturdy installation of mixer tap

Orbit wastes with easy empty fold-back basket and pipework supplied

90mm waste hole allowing waste disposer installation

Brushed finish

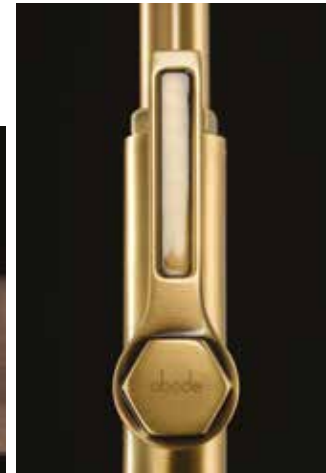


Full specification documents can be found at [www.abodedesigns.co.uk](http://www.abodedesigns.co.uk)





# Taps



## CONTENTS

Steaming Hot Water Taps	96
Industrial Style Taps	138
<b>Contemporary:</b>	
Single Lever Taps	160
Monobloc Taps	184
Pull Out & Professional Taps	212
Stainless Steel Taps	240
Traditional Taps	252
Water Filter Taps	268
Swich	282
Tap Accessories	286

Scan to view  
Kitchen Taps  
Price List



# Style & finishes

A completely unique range of designs shaped by our UK design team. From contemporary single levers and functional steaming hot water taps to traditional monoblocs in a variety of finishes, we have an extensive range to ensure we have the perfect high quality design for every kitchen.

**Design, quality and innovation are at the heart of what we do.**

Finding a tap that not only matches, but perfectly complements your kitchen and all of the accessories within it can be challenging. That's why we are constantly updating our portfolio, as well as adding new finishes to the mix to ensure the perfect finishing touch every time.



**PRONTEAU™**  
by abode

Steaming Hot Water Taps



Water Filter Taps

Stainless Steel



Industrial



Single Levers



Monoblocs



Pull Outs and Professional



Traditional



CHROME

BRUSHED NICKEL

STAINLESS STEEL

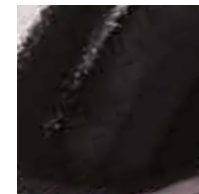
PEWTER\*



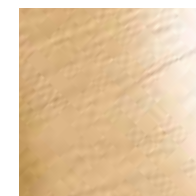
GRAPHITE



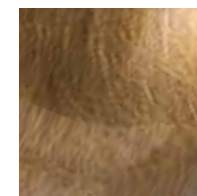
MATT BLACK



BLACK NICKEL



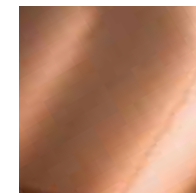
BRUSHED BRASS



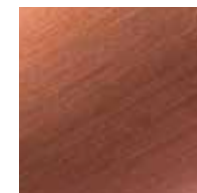
ANTIQUE BRASS



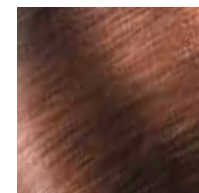
FORGED BRASS\*



POLISHED COPPER



URBAN COPPER



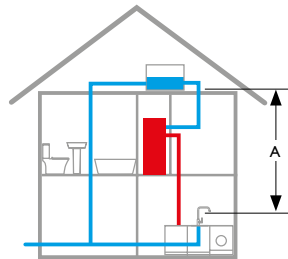
CENTURY COPPER\*

\* See Classically Abode brochure for the range

# Tap performance

To ensure you achieve the best possible performance from your chosen tap, you need to be able to identify the existing plumbing system in place and therefore estimate the water pressure.

The following information provides a general overview on water pressure, however we do recommend that a plumber checks your water pressure with a pressure gauge.



## Lower Pressure (gravity fed / vented system)

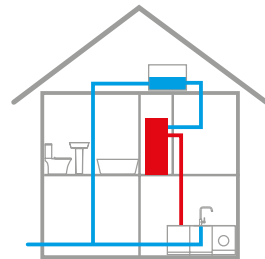
You have a cold water tank in the loft space and a hot water tank in the airing cupboard

You don't have an additional pump which is activated when you turn on any hot tap

The amount of hot water available to you is limited

With a gravity fed system you can approximate your hot water pressure by dividing the vertical distance (A) in metres by 10 (e.g. 3m = 0.3 Bar)

You should choose taps which are suitable for use with a lower pressure system



## High Pressure (pumped gravity fed system)

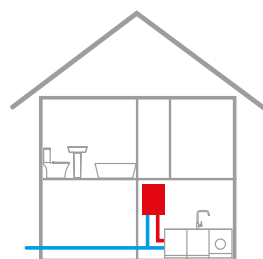
You have a cold water tank in the loft and a hot water cylinder in the airing cupboard

You have an additional pump (normally located near the hot water cylinder) which is automatically activated when you turn on any hot tap

The pressure is defined by the pump. See pump manufacturer's details.

You should be free to choose from most of our tap range

The amount of hot water available is limited



## High Pressure (combi boiler)

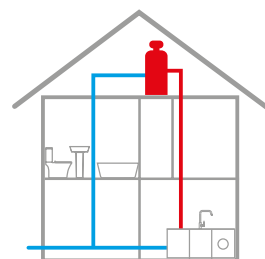
You have a boiler but no separate hot water storage cylinder

The boiler is typically found in the kitchen

Hot water is delivered instantly and on demand

This system is typically delivers the hot water between 1 and 1.5 bar

You should be free to choose from most of our tap range



## High Pressure (unventilated system)

Most commonly referred to as a "Megaflo" or similar brand

You have a hot water cylinder directly connected to the cold water supply. Above the cylinder could be an expansion vessel. (The hot water cylinder is typically in the loft space)

You do not have a cold water tank

The hot and cold water pressure is typically around 3 bar

The amount of hot water available is limited

You should be free to choose from any of our taps



## WATER AERATION

All mixers use spout aerators or flow straighteners to add bubbles to the water. These innovations in fluid technology keep your water flow in a controlled and distinctive pattern and eliminates splash back.

## VALVE CARTRIDGES

Abode use ceramic disc valves in all of our tap designs. These are tested for over 200,000 cycles before we will pass them for use within our taps. Why? Well this means that under normal use conditions your tap valves have proven that they will work for many years to come. The kitchen tap is the most used appliance in the kitchen, so valve quality assurance is essential.

## TESTING

Abode products are designed specifically for the UK by our team of in-house designers. We use artisan hand polishing techniques, sophisticated plating and powder coating processes to ensure a blemish free surface, along with robotic production of parts for precision. Every Abode product is 100% end of line tested before it leaves the factory, giving you absolute peace of mind.

## EVERYTHING IN ONE BOX

After taking all this care with the product, we want to ensure they reach you in perfect condition with all the parts that you will need for a seamless and straightforward installation. Fixing kits and tail pipes (with non return valves where necessary) are provided. If the tap is heavy or tall, we also provide you with a tap stabilisation bracket in the box. We try and think of everything so you don't have to.

Throughout this section you will see the following symbols next to products where relevant:





**PRONTEAU™**  
by abode

## STEAMING HOT WATER TAPS

Useful technology is fast becoming the norm in the modern kitchen, with hot water taps being firmly among their number. Many of us increasingly look for additional functionality from the kitchen tap as we would from an appliance. Steaming hot water taps fulfill a need and we'll put your mind at ease about any safety concerns across the following pages, a steaming hot water tap is safer than a kettle in many ways.



Scan to view  
Pronteau by  
Abode Price  
List



# Why should I choose a

**PRONTEAU**<sup>TM</sup>  
by *abode*

## Steaming Hot Water Tap?



### 1/ SAVE TIME

Adding a Pronteau to the kitchen is guaranteed to make a difference and leave you thinking how you got by without a steaming hot water tap.

Some of the benefits to note are;

- Instant hot drinks
- Speed up cooking tasks such as pan filling for vegetables, pasta or rice cooking
- Instant porridge or noodles
- Speeding up cleaning tasks such as pan and dish rinsing

### 2/ DO YOUR BIT FOR THE ENVIRONMENT



By switching to filtered water from the tap in comparison to buying bottled mineral water you will save money as well as aiding the reduction of plastic waste.

Our 4 IN 1 ranges have it all, domestic hot & cold water, filtered steaming hot water and filtered cold water.

All Pronteau filters are part of a **FREE filter recycle scheme**.



### 3/ STREAMLINE THE KITCHEN

Free up worktop and fridge space of kettles and filter jugs for clutter-free worktops and that extra fridge space that we often find ourselves needing.

### 4/ SERVICE ON HAND

We have an in-house Pronteau specialist service team and engineer fleet on the road.



### 5/ REDUCE WATER WASTAGE

As there is no need to fill the kettle every time a hot drink is made or a pan is to be filled, you will find that water and energy wastage in the household is reduced.

### 6/ IMPROVE THE TASTE OF HOT DRINKS WHILST PROTECTING YOUR BOILER

All Pronteau products are supplied with a filter. This filter has an important role as it maintains the long-term health of your boiler, preventing excessive limescale build up.

Secondly, achieve great tasting hot drinks every time as the filter will improve the taste of your water and prevent the scum that you sometimes find on hot drinks.



### 8/ GET THE PERFECT HOT DRINK

With all our hot water products, you can set the boiler to temperature's between 75 and 98 degrees allowing you to dispense water at the optimum temperature for your needs.

Check our handy table showing the perfect temperature for a range of hot drinks at [pronteau.co.uk](http://pronteau.co.uk)



### 7/ NEVER WORRY ABOUT SAFETY

Our products have been designed with safety in-mind. Our patented HotKey® range is considered by many as the safest hot tap option as the HotKey® can be stored out of reach of children when not in use. The ProBoil.2X collection have a two-stage handle to dispense the steaming hot water, push the handle down or slide it across and turn the handle to safely dispense the water.

# Choosing the right Hot Water Tap for you

THE PRONTEAU RANGE IS LIMITLESS. ACROSS THE COLLECTION WE OFFER A WIDE RANGE OF STYLES AND FINISHES TO MEET YOUR DESIGN EXPECTATIONS WITH THE ADDED BENEFIT OF STEAMING HOT WATER ON TAP.



## STYLE

A variety of models, styles, popular finishes and boiler sizes allow you to tailor your experience of Pronteau hot water taps to ensure you get the right model for your household.

We have most recently launched our Slimline Prothia 3 IN 1 hot taps that will look perfect in every home. Not only that, our latest 4 IN 1 mechanical range, Propure offer hot and cold domestic supply along with filtered steaming hot and filtered cold drinking water.

## Professional style

Available in the 3 IN 1 range. The steaming hot water is dispensed from an outlet in the crossbar. Also features a pull around with spray function for the domestic hot and cold supply.



## FUNCTIONS

### 3 IN 1

domestic cold, domestic hot and filtered steaming hot water

### 4 IN 1

domestic cold, domestic hot, filtered cold and filtered steaming hot water

**Why**  
98 degrees?

When we developed our innovative range of steaming hot water taps for launch in 2016 we took into consideration every aspect of safety, not only for the dispensing of the steaming hot water but also the maximum temperature requirements for the stored water in the boiler. This is the main reason our products store water to a maximum temperature of 98°C, this makes our product fully compliant with Part G(3) of the UK Building Regulations, and all Pronteau taps, boilers and filters are WRAS approved or WRAS pending.



**PRONTEAU™**  
by obode

3 IN 1 with **PROBOIL.2X**

3 IN 1 functionality delivering; domestic hot, domestic cold and steaming hot filtered water

Dual stage water operation safety - the handles of all taps incorporate safety devices to limit use

Supplied with the compact ProBoil.2X boiler with a 2.1 litre capacity

All Pronteau taps have cool touch spouts thanks to a centrally insulated steaming water channel

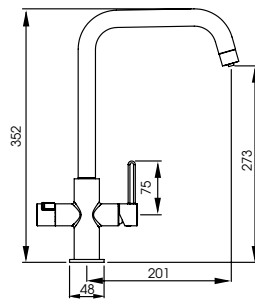
Supplied with multistage filtration to address scale formation in the boiler, remove contaminants, and improve taste & odour of the steaming hot water to achieve the perfect hot drink

The supplied filter is fully recyclable by Abode



TAPS  
HOT WATER TAPS \ 3 IN 1 | 103

Image shows the Prothia Slimline Monobloc Swan in Matt Black



Prothia  
Quad Spout

**PT1140**  
Chrome



The Prothia features a stylish, single side lever, blends square and round lines and a quad spout to create a sleek design with a modern edge, with the additional functionality of steaming hot water delivered safely through our cool touch spout.

This slimline 3 IN 1 tap is currently the slimmest of its kind in the market.



The steaming hot water is operated by the two stage handle lock on the left. This must be pushed left and held whilst turning the handle back to safely dispense the steaming hot water.



**PT1141**  
Brushed Nickel



**PT1142**  
Matt Black



**PT1143**  
Brushed Brass



**PT1144**  
Urban Copper

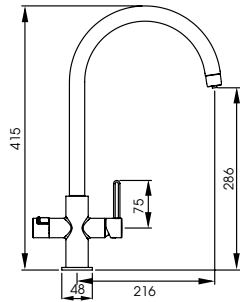
Full specifications are available at [www.pronteau.co.uk](http://www.pronteau.co.uk)



Scan to view  
video showing  
the Prothia  
in action on  
our YouTube  
channel.



Image shows the Prothia 3 IN 1 Slimline Mixertap with Quad Spout in Brushed Brass



Prothia  
Swan Spout

**PT1130**  
Chrome



**more Style:** Contemporary slimline aesthetic

**more Choice:** 5 finishes and 2 designs

**more Control:** Digital boiler interface with filter change indication

**more Simplicity:** Simple colour coded toolless installation and commissioning

**more Safety:** Dual stage safety handle for peace of mind



Two stage  
handle lock



**PT1131**  
Brushed Nickel



**PT1132**  
Matt Black



**PT1133**  
Brushed Brass



**PT1134**  
Urban Copper

Full specifications are available at [www.pronteau.co.uk](http://www.pronteau.co.uk)



Scan to view  
video showing  
the Prothia  
in action on  
our YouTube  
channel.



Image shows the Prothia 3 IN 1 Slimline Mixertap with Swan Spout in Chrome

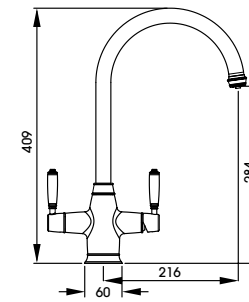
ProTrad  
3 IN 1

CLASSIC STYLE  
meets  
MODERN FUNCTION



**PRONTEAU**<sup>™</sup>  
by *abode*

3 IN 1 with **PROBOIL.2X**



**NEW**

Protrad  
Monobloc

**PT1190**  
Chrome



The perfect pairing for an Abode ceramic sink. Our compact PROBOIL.2X boiler sits neatly in a Belfast cabinet.

Pairing timeless, British style with the latest engineering to give you instant access to steaming hot water at the twist of a handle - The ProTrad is a true modern day classic!

Steaming hot water is dispensed via a two stage handle operation, push the left handle down and pull forward to release the steaming hot water.

Each tap is supplied with the temperature controllable, 2L PROBOIL.2X boiler and paired filter to protect your boiler and deliver the perfect hot drink.



**PT1191**  
Brushed Nickel

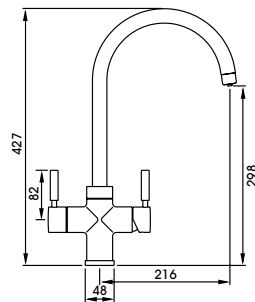


**PT1192**  
Antique Brass

Full specification documents can be found at [www.pronteau.co.uk](http://www.pronteau.co.uk)

**PRONTEAU**<sup>™</sup>  
by **abode**

3 IN 1 with **PROBOIL.2X**



Prostream  
Monobloc

**PT1101**  
Chrome



The Prostream feature clean curves, perfectly balanced proportions and packed with the latest engineering technology to create a tap that is stylish, steaming and safe.

Supplied with the PROBOIL.2X boiler and recyclable PROBOIL filter.



**PT1102**  
Brushed Nickel



**PT1103**  
Graphite



**PT1104**  
Matt Black



**PT1105**  
Urban Copper



TAPS

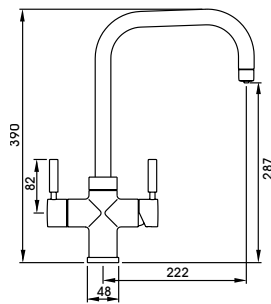
HOT WATER TAPS \ 3 IN 1 \ 111

Image shows the Prostream 3 IN 1 Monobloc in Urban Copper



**PRONTEAU**<sup>™</sup>  
by **abode**

3 IN 1 with **PROBOIL.2X**



Prostyle  
Monobloc

**PT1111**  
Chrome



The Prostream features dynamic, dual lever styling, a minimal and modernist contoured spout and packed with the latest engineering to create a tap that is always stylish, steaming and safe.

Supplied with the PROBOIL.2X boiler and recyclable PROBOIL filter.



**PT1112**  
Brushed Nickel



**PT1113**  
Graphite



**PT1114**  
Matt Black



**PT1115**  
Urban Copper



TAPS

HOT WATER TAPS \ 3 IN 1 | 113

Image shows the Prostyle 3 IN 1 Monobloc in Brushed Nickel

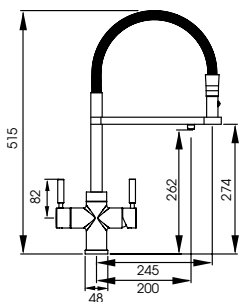
**PRONTEAU**<sup>™</sup>  
by **abode**

3 IN 1 with **PROBOIL.2X**



Professional  
Monobloc

**PT1122**  
Chrome



3 IN 1 functionality delivering; domestic hot, domestic cold and steaming hot, filtered water

Pull around functionality with spray feature for domestic hot and cold

Dedicated steaming hot water outlet on tap crossbar

Safety 2 stage hot water operation

Energy saving cold Start valve technology

360° cool touch spout thanks to centrally insulated steaming water channel



Full specifications are available at [www.pronteau.co.uk](http://www.pronteau.co.uk)



**PT1123**  
Brushed Nickel



TAPS

HOT WATER TAPS \ 3 IN 1 | 115

Image shows the Professional 3 IN 1 Monobloc in Chrome

**PRONTEAU™**  
by obode

4 IN 1 with **PROBOIL.2X**

4 IN 1 functionality delivering; domestic hot, domestic cold and steaming hot, filtered cold water

Dual stage water operation safety - the handles of all taps incorporate safety devices to limit use

Supplied with the new ProBoil.2X boiler with a 2.1 litre capacity

All Pronteau taps have cool touch spouts thanks to centrally insulated steaming water channel

Supplied with multistage filtration to address scale formation in the boiler, remove contaminants, and improve taste & odour of the steaming hot water to achieve the perfect hot drink

The supplied filter is fully recyclable by Abode



Download a copy of the Pronteau brochure at [www.pronteau.co.uk](http://www.pronteau.co.uk)



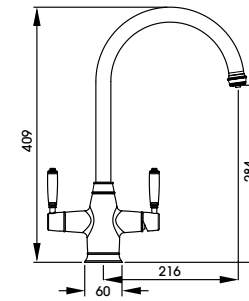
Image shows the Propure 4 IN 1 Monobloc Quad Spout in Matt Black

ProTrad  
4 IN 1

CLASSIC STYLE  
meets  
MODERN FUNCTION



**PRONTEAU**™  
by abode 4 IN 1 with **PROBOIL.2X**



NEW

Protrad  
Monobloc

**PT1193**  
Chrome



The perfect pairing for an Abode ceramic sink. Our compact PROBOIL.2X boiler sits neatly in a Belfast cabinet.

Pairing timeless, British style with the latest engineering to give you instant access to steaming hot water at the twist of a handle - The ProTrad is a true modern day classic!

Steaming hot water is dispensed via a two stage handle operation, push the left handle down and pull forward to release the steaming hot water.

Each tap is supplied with the temperature controllable, 2L PROBOIL.2X boiler and paired filter to protect your boiler and deliver the perfect hot drink.



**PT1194**  
Brushed Nickel

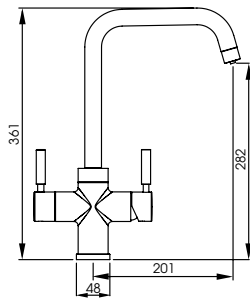


**PT1195**  
Antique Brass

Full specification documents can be found at [www.pronteau.co.uk](http://www.pronteau.co.uk)

Propure Monobloc  
Quad Spout

**PT1160**  
Chrome



On top of hot & cold domestic water and 98°steaming hot water on demand, Propure offers a more sustainable way of living with the supply of fresh filtered water meaning you can make a start to ditch the use of single use plastic in the home.

Based on our award winning Prostream and Prostyle design series, water is delivered safely through our cool touch spout.



**PT1161**  
Brushed Nickel



**PT1162**  
Matt Black



**PT1163**  
Brushed Brass



**PT1164**  
Urban Copper



Scan to view  
video showing  
the Propure  
in action on  
our YouTube  
channel.

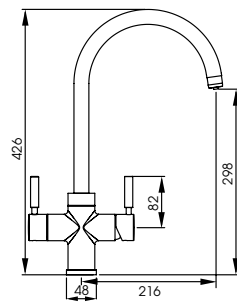


Image shows the Propure 4 IN 1 Monobloc in Brushed Brass



Propure Monobloc  
Swan Spout

**PT1150**  
Chrome



**more Style:** Contemporary aesthetic

**more Choice:** 5 finishes and 2 designs

**more Control:** Digital boiler interface with filter change indication

**more Simplicity:** Simple colour coded toolless installation and commissioning

**more Safety:** Dual stage safety handle for peace of mind



**PT1151**  
Brushed Nickel



**PT1152**  
Matt Black



**PT1153**  
Brushed Brass



**PT1154**  
Urban Copper

Scan to view  
video showing  
the Propure  
in action on  
our YouTube  
channel.



**PRONTEAU**<sup>™</sup>  
by obode

4 IN 1 with **PROBOIL.4E**

A range of monobloc and 3 part instant hot water taps, in an array of on trend finishes

All taps have 4 IN 1 functionality; domestic hot & cold, instant steaming hot and filtered cold water

Products feature a patented design, the steaming hot water is dispensed using our exclusive HotKey® - possibly the safest way to dispense instant hot water

All products are supplied with the NEW PROBOIL.4E, an exclusive 4L boiler design

All taps are supplied with the premium water optimisation filter. Part of the Abode filter recycle scheme



Download a copy of the Pronteau brochure at [www.pronteau.co.uk](http://www.pronteau.co.uk)



TAPS

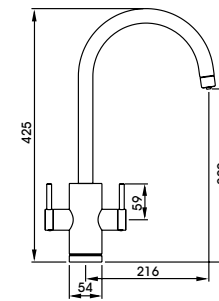
HOT WATER TAPS \ 4 IN 1 | 125

Image shows the Project 3 Part Mixertap in Chrome



**PRONTEAU™**  
by **abode**

4 IN 1 with **PROBOIL.4E**



Profile  
Monobloc

**PT1001-2**  
Chrome



Featuring patented HotKey® technology. The instant steaming hot water is dispensed only when the HotKey is placed against the tap body, optimising safety and making this the ideal option for anyone with dexterity problems or similar.

Sleek swan spout is perfect for traditional and contemporary kitchens alike.

4 IN 1 functionality; domestic hot & cold, instant steaming hot and filtered cold water.

Supplied with the NEW PROBOIL.4E boiler and premium water optimisation filter.



**PT1002-2**  
Brushed Nickel



**PT1026-2**  
Matt Black



**PT1051**  
Antique Brass

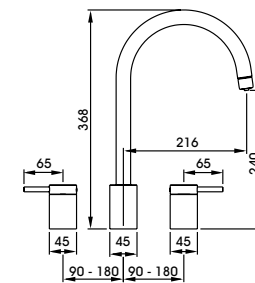
Full specification documents can be found at [www.pronteau.co.uk](http://www.pronteau.co.uk)





**PRONTEAU™**  
by obode

4 IN 1 with **PROBOIL.4E**



Profile  
3 Part Mixertap

**PT1007-2**  
Chrome



Featuring patented HotKey® technology. The instant steaming hot water is dispensed only when the HotKey is placed against the tap body, optimising safety and making this the ideal option for anyone with dexterity problems or similar.

Unique 3 Part design. Achieve a premium, truly traditional finish with all the functionality you need on tap.

4 IN 1 functionality; domestic hot & cold, instant steaming hot and filtered cold water.

Supplied with the NEW PROBOIL.4E boiler and premium water optimisation filter.

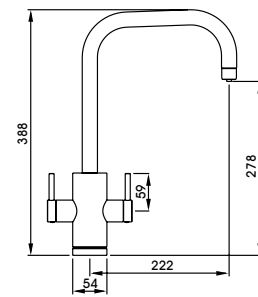


**PT1008-2**  
Brushed Nickel

**PT1053**  
Antique Brass

NEW

Full specification documents can be found at [www.pronteau.co.uk](http://www.pronteau.co.uk)



Project  
Monobloc

**PT1003-2**  
Chrome



Featuring patented HotKey® technology. The instant steaming hot water is dispensed only when the HotKey is placed against the tap body, optimising safety and making this the ideal option for anyone with dexterity problems or similar.

Stylish quad spout makes this the perfect option for contemporary kitchens.

4 IN 1 functionality; domestic hot & cold, instant steaming hot and filtered cold water.

Supplied with the NEW PROBOIL.4E boiler and premium water optimisation filter.



**PT1004-2**  
Brushed Nickel



**PT1027-2**  
Matt Black



**PT1052**  
Brushed Brass

NEW



Image shows the Project Monobloc in Brushed Brass

Project  
3 Part Mixertap

**PT1009-2**  
Chrome



Featuring patented HotKey® technology. The instant steaming hot water is dispensed only when the HotKey is placed against the tap body, optimising safety and making this the ideal option for anyone with dexterity problems or similar.

Unique 3 Part design. Achieve a premium, contemporary finish with all the functionality you need on tap.

4 IN 1 functionality; domestic hot & cold, instant steaming hot and filtered cold water.

Supplied with the NEW PROBOIL.4E boiler and premium water optimisation filter.



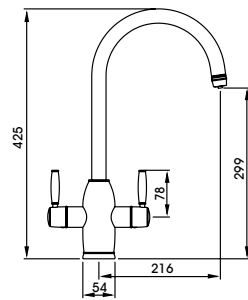
**PT1010-2**  
Brushed Nickel

**PT1054**  
Matt Black



**PRONTEAU**<sup>™</sup>  
by **abode**

4 IN 1 with **PROBOIL.4E**



Province  
Monobloc

**PT1005-2**  
Chrome



Featuring patented HotKey® technology. The instant steaming hot water is dispensed only when the HotKey is placed against the tap body, optimising safety and making this the ideal option for anyone with dexterity problems or similar.

Traditional design with slender body and ceramic style handles.

4 IN 1 functionality; domestic hot & cold, instant steaming hot and filtered cold water.

Supplied with the NEW PROBOIL.4E boiler and premium water optimisation filter.



**PT1006-2**  
Brushed Nickel



**PT1019-2**  
Antique Brass



Full specifications are available at [www.pronteau.co.uk](http://www.pronteau.co.uk)



TAPS

HOT WATER TAPS \ 3 IN | 135

Image shows the Province Monobloc in Antique Brass

# The Boilers



PROBOIL.2X

All two-stage Pronteau taps across pages 102 to 123 include the Proboil.2X boiler which has a 2L tank capacity.

All Pronteau HotKey® taps across pages 124 to 135 include the Proboil.4E boiler which has a 4L tank capacity.

Both boilers have the following features:

Controllable temperature range which can be set between 75 & 98° via the on screen digital controls

Compact stainless steel tank which fits beneath a Belfast or Butler sink

Simple to install via colour coded connectors

Filter life indicator

WRAS approved



PROBOIL.4E

NATIONAL TEAM OF OVER 30 SERVICE ENGINEERS ACROSS THE UK SHOULD YOU NEED US



All Pronteau boilers are protected by our Proboil filters (supplied with all system product purchases). These filters are essential to ensure protection of your boiler from scale build up as well as reducing water hardness out of the tap to improve taste and clarity of hot drinks.

Scan to view all Pronteau videos on our YouTube channel.



Please visit [www.pronteau.co.uk](http://www.pronteau.co.uk) for more information on Proboil maintenance.

## INDUSTRIAL STYLE TAPS

Add soft industrial touches and texture to your kitchen design with the Hex and Fraction families. Our industrial taps offer will coordinate effortlessly with any kitchen featuring industrial style elements or add interest and edge to a kitchen design featuring traditional elements.

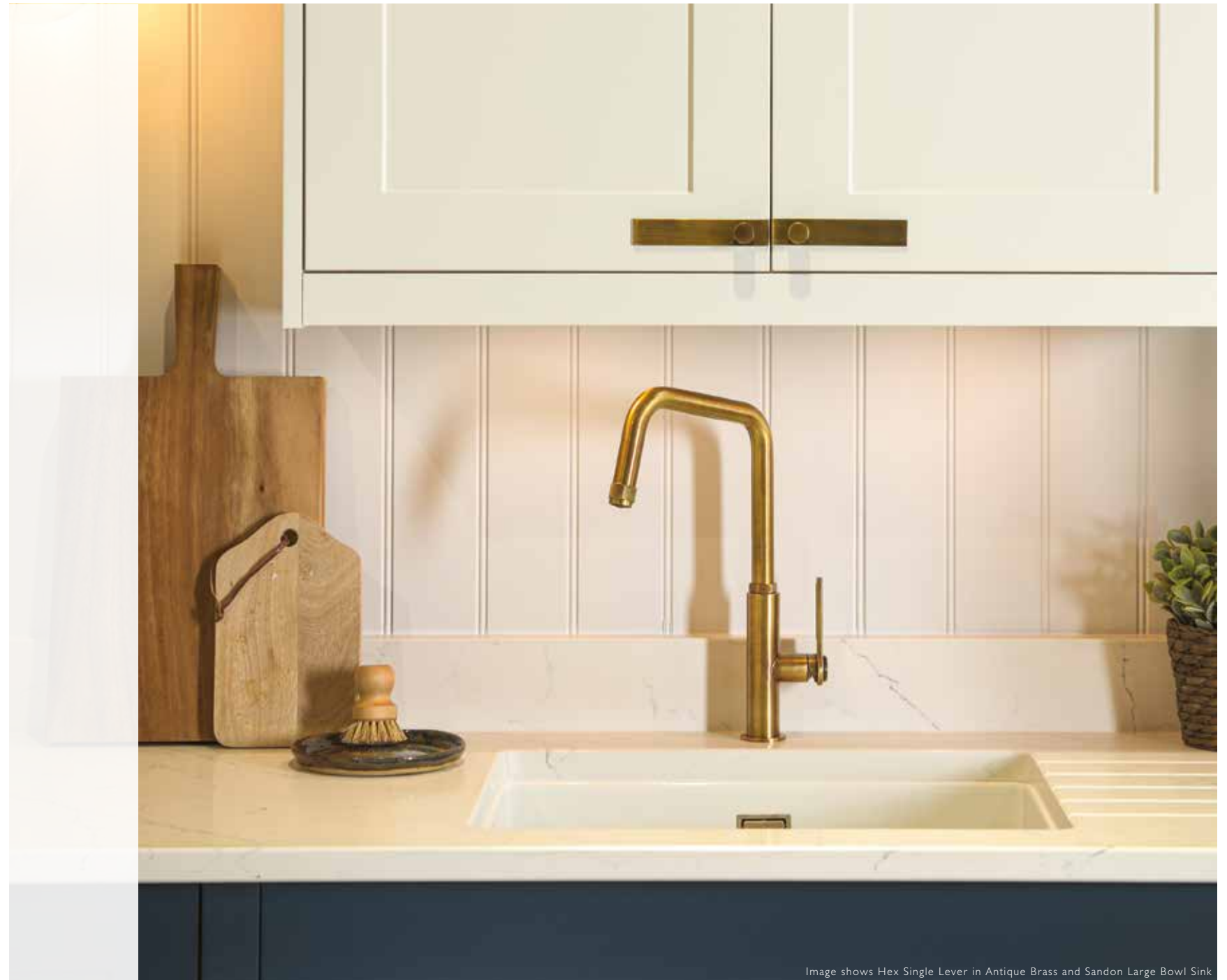


Image shows Hex Single Lever in Antique Brass and Sandon Large Bowl Sink



# / THE INDUSTRIAL TREND

CONTINUES TO THRIVE!

We have extended our award winning Hex range by adding a Matt Black finish with brass accents on the spout, handle(s), collar and base plinth to the single lever, dual lever and pull out Hex collections.

Designed to challenge traditional concepts and make the ultimate statement, with distinctive features, the Hex range will coordinate effortlessly with any kitchen featuring industrial style elements and also add interest and edge to a kitchen design featuring traditional elements.

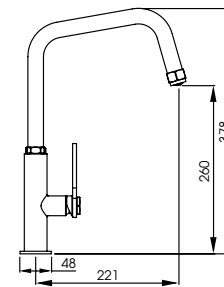
We have strengthened our industrial taps offer further by adding the Fraction collection. A unique L-spout design with cog style detailing on the handle to give a more subtle industrial injection. This collection includes; a single lever, pull out and professional option.

Choose from an array of finishes across this collection for the perfect finishing touch.





Image shows the Sandon Large Single Bowl and HEX Single Lever in Antique Brass



HEX  
Single Lever

**AT2085**  
Brushed Nickel



Premium quality brass construction

Striking industrial chic design with hexagonal features on the handle & tip and base of the spout

Energy efficient cold start function

Hidden cache aerator



**AT2086**  
Matt Black



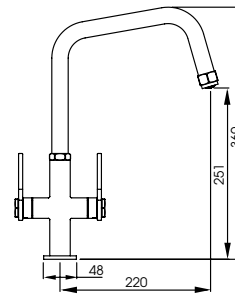
**AT2087**  
Antique Brass



**AT2180**  
Matt Black / Antique Brass

Full specification documents can be found at [www.abodedesigns.co.uk](http://www.abodedesigns.co.uk)





HEX  
Monobloc

**AT2091**  
Brushed Nickel



Premium quality solid brass construction

Striking industrial chic design with hexagonal features on the handle & tip and base of the spout

Industrial styled hot and cold lettering on the handles



**AT2092**  
Matt Black

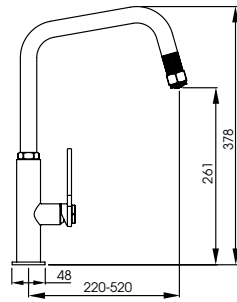


**AT2093**  
Antique Brass



**AT2179**  
Matt Black / Antique Brass

Full specification documents can be found at [www.abodedesigns.co.uk](http://www.abodedesigns.co.uk)



HEX  
Single Lever Pull Out

**AT2088**  
Brushed Nickel



Premium quality brass construction

Striking industrial chic design with hexagonal features and cross hatched knurling detail on the tip of the spout

Pull out hose for additional functionality (no spray function)

Energy efficient cold start function



**AT2089**  
Matt Black



**AT2090**  
Antique Brass

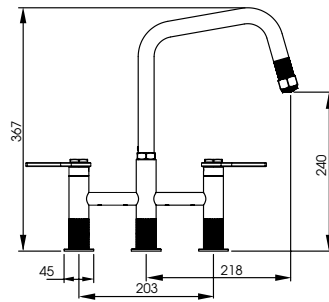


**AT2181**  
Matt Black / Antique Brass

Full specification documents can be found at [www.abodedesigns.co.uk](http://www.abodedesigns.co.uk)



Image shows the Studio Compact and HEX Single Lever Pull Out in Brushed Nickel



HEX  
Bridge Pull Out

AT2198  
Brushed Nickel



Features smooth-flex pull out functionality with 60cm reach

Diamond knurled detail adorns the spout end and legs

Prominent hexagonal nut inspired details on the handles and spout

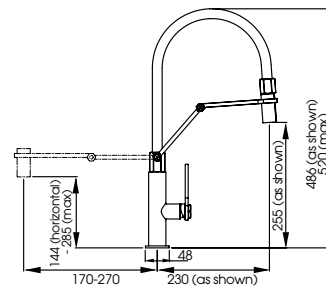
Coordinates effortlessly with contemporary and traditional settings alike



AT299  
Antique Brass

Full specification documents can be found at [www.abodedesigns.co.uk](http://www.abodedesigns.co.uk)





HEX Professional  
with spray

**AT2094**  
Brushed Nickel



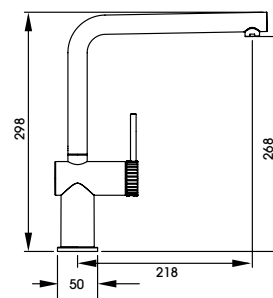
- Premium quality solid brass construction
- Striking industrial chic design with pivoting mechanical style arm
- Contrasting, durable silicone hose cover
- Pull-around hose with spray feature
- Energy efficient cold start function
- Height adjustable via the central arm and rotating spout capability



Full specification documents can be found at [www.abodedesigns.co.uk](http://www.abodedesigns.co.uk)



Image shows the Fraction Single Lever in Matt Black



Fraction  
Single Lever

**AT2152**  
Chrome



abode

The 90-degree angled spout provides sharp yet sophisticated style

Elongated, slim single lever handle for ultimate ease of use

Industrial cog style handle with discreet hot and cold indicators

Available in four finishes, get the perfect finishing touch every time



**AT2153**  
Brushed Nickel



**AT2155**  
Matt Black

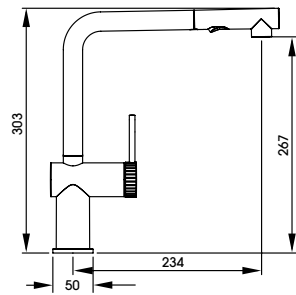


**AT2154**  
Antique Brass

Full specification documents can be found at [www.abodedesigns.co.uk](http://www.abodedesigns.co.uk)

Fraction  
Pull Out

**AT2156**  
Chrome



Industrial style with the added functionality of a pull-out spray feature

Neatly hidden, you get the same chic look of the Fraction single lever with the benefit of a spray function. So useful for cleaning tasks

Available in four finishes

Simple and stylish spray button,  
in-keeping with this sleek tap design.



**AT2157**  
Brushed Nickel



**AT2159**  
Matt Black



**AT2158**  
Antique Brass

Full specification documents can be  
found at [www.abodedesigns.co.uk](http://www.abodedesigns.co.uk)

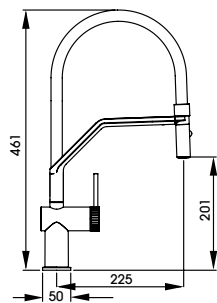
abode



Image shows the Fraction Pull Out in Matt Black



Image shows the Fraction Semi Professional in Chrome



Fraction  
Semi Professional

**AT2160**  
Chrome



A style statement. The contrasting elements of this tap perfectly compliment one another

Features a pull around spray function with magnetic self-locating body and head assembly

Available in a chrome or brushed finish with contrasting black crossbar and silicone hose for a truly industrial feel



**AT2161**  
Brushed Nickel

Full specification documents can be found at [www.abodedesigns.co.uk](http://www.abodedesigns.co.uk)

## CONTEMPORARY TAPS

Contemporary taps can be defined by several characteristics; sleek lines, stark shapes, distinctive spout styling, the latest finishes and more. The carefully thought out selection of styles available across our range ensures there is a style to suit every environment.

Complement your kitchen design with the latest finishes to add a showstopping feature tap.



Image shows the Agilis Single Lever in Brushed Brass



## SINGLE LEVERS

With a variety of benefits, the single lever tap is a popular choice for many, so water wastage is minimised whilst the flow gets to the right temperature. The temperature is easy to adjust with a flick of the wrist and several sleek and streamlined designs, including top lever styles are available.

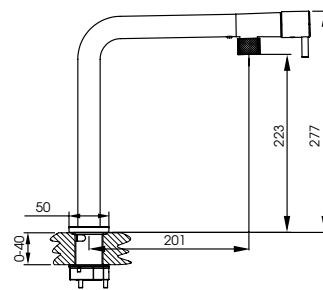




Scan to view  
the Agilis  
video on our  
YouTube  
channel.



Image shows the Agilis Single Lever in Black & Brass



NEW

Agilis  
Single Lever

**AT2184**  
Chrome



With innovative upfront control, Agilis makes for improved practicality and ease of use.  
Distinctly Agile

Flick on /off with swipe of the hand – ideal for limiting touch when hands are dirty

Upfront controls makes reaching the handle easier

On trend colourways with minimalist styling, distinctly different to any other Abode tap

Knurled detail at aerator casing providing a touch of industrial styling

Neoperl Aerator for reduced splashing and water consumption



**AT2185**  
Brushed Nickel



**AT2186**  
Matt Black



**AT2187**  
Black & Brass

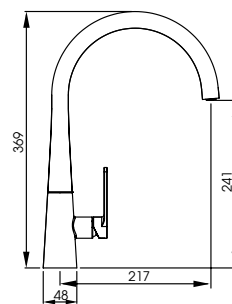


**AT2188**  
Brushed Brass

Full specification documents can be found at [www.abodedesigns.co.uk](http://www.abodedesigns.co.uk)



Image shows the Coniq R Single Lever in Brushed Nickel



Coniq R

**AT2115**  
Chrome



Stylish and contemporary conical style utilising advanced hydroforming manufacturing techniques

Smooth, rotating swan necked spout, with integrated aeration hidden from view

Four hardwearing finishes available, including the durable and striking matt black and polished copper finishes



**AT2116**  
Brushed Nickel

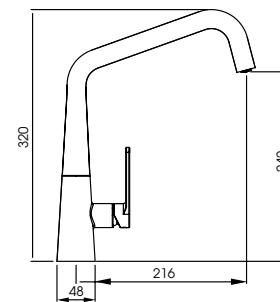


**AT2117**  
Matt Black



**AT2118**  
Polished Copper

Full specification documents can be found at [www.abodedesigns.co.uk](http://www.abodedesigns.co.uk)



Coniq S

**AT2113**  
Black Nickel



Strong, bold and brave styling epitomises this design

Using the latest manufacturing techniques, this model integrates a hidden cache aerator into the functional and modern spout design

Available in two luxury finishes – Polished Copper and Black Nickel, offering a mirrored Chrome effect to match plug points and sockets

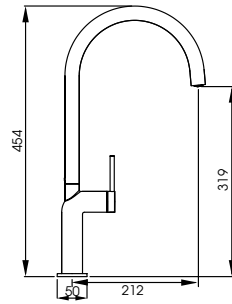


**AT2114**  
Polished Copper

Full specification documents can be found at [www.abodedesigns.co.uk](http://www.abodedesigns.co.uk)

Tubist

**AT2127**  
Brushed Nickel



Modern European styling lends everything to the curvaceous and organic form of the Tubist

Using cold start valve technology, the environmentally friendly design will help save heat and wasted energy

Three finishes available: Brushed Nickel, Matt Black & Polished Copper



**AT2128**  
Matt Black



**AT2129**  
Polished Copper

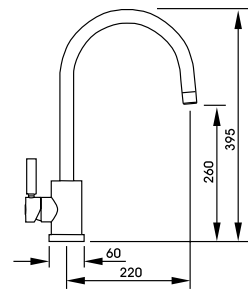
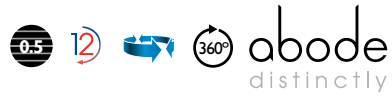
Full specification documents can be found at [www.abodedesigns.co.uk](http://www.abodedesigns.co.uk)



Image shows the Tubist Single Lever in Matt Black

Atlas  
Single Lever

**AT1092**  
Chrome



Metal construction throughout. You can feel the quality of the Atlas family of products

Single lever for effortless single-handed control

Four finishes available, the Atlas single lever family will fit seamlessly in any kitchen design



**AT1093**  
Brushed Nickel



**AT2101**  
Matt Black



**AT2102**  
Brushed Brass

Full specification documents can be found at [www.abodedesigns.co.uk](http://www.abodedesigns.co.uk)

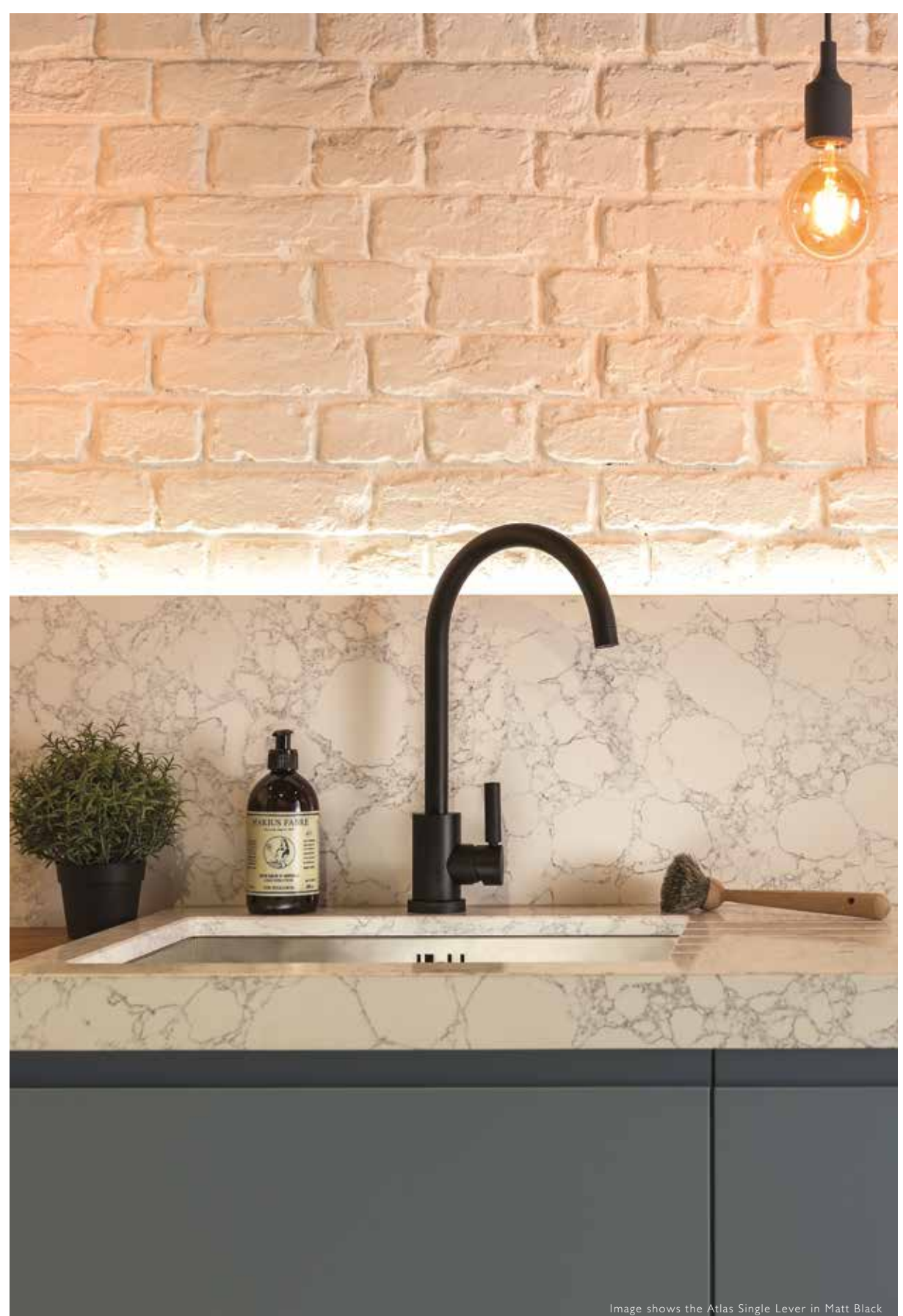
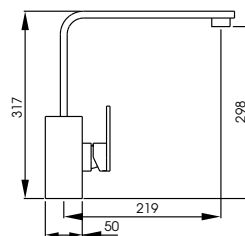


Image shows the Atlas Single Lever in Matt Black



New Media  
Single Lever

**AT1181**  
Brushed Nickel



Bold and contemporary styling

Smooth, rotating flat planed spout with large square base and minimalist handle design

Three finishes available, including the durable and striking, powder coated matt black finish



**AT1180**  
Chrome

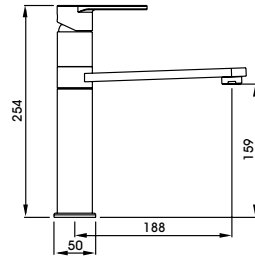


**AT1182**  
Matt Black

Full specification documents can be found at [www.abodedesigns.co.uk](http://www.abodedesigns.co.uk)

Prime  
Single Lever

**AT1254**  
Chrome



Modern European styling lends to the curvaceous and organic form of the Prime

Unique handle for complete ease of use and control of the water flow and temperature

Three finishes available;  
chrome, brushed nickel and the new matt black finish



Subtle  
Chrome  
detailing



**AT1255**  
Brushed Nickel



**AT2104**  
Matt Black

Full specification documents can be found at [www.abodedesigns.co.uk](http://www.abodedesigns.co.uk)

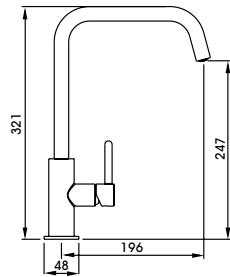


Image shows the Denton and Prime Single Lever in Matt Black



Althia  
Single Lever

**AT1258**  
Chrome



Sleek contoured spout boasting a simple yet elegant design

Slim single lever handle makes it easy to use with the use of one finger to control water flow and temperature

Available in 6 finishes, find the perfect finishing touch for your design with the Althia every time



**AT1259**  
Brushed Nickel



**AT1269**  
Graphite



**AT1270**  
Matt Black



**AT1272**  
Urban Copper

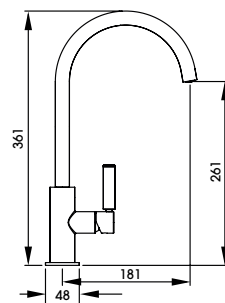


**AT2103**  
Brushed Brass

Full specification documents can be found at [www.abodedesigns.co.uk](http://www.abodedesigns.co.uk)



Image shows the Xcite 1.5 Bowl in Grey Metallic Granite and Althia Single Lever in Matt Black



Globe  
Single Lever

**AT2146**  
Chrome



Perfectly in proportion. The slim body and sleek swan spout are the perfect combination

Discreet hot and cold indicators

Available in four finishes to perfectly compliment an array of kitchen designs



**AT2147**  
Brushed Nickel



**AT2149**  
Matt Black

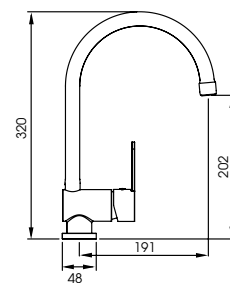


**AT2148**  
Brushed Brass

Full specification documents can be found at [www.abodedesigns.co.uk](http://www.abodedesigns.co.uk)



Image shows the Oriel Single Bowl in Black Granite and Czar Single Lever



Czar  
Single Lever

**AT1241**  
Chrome



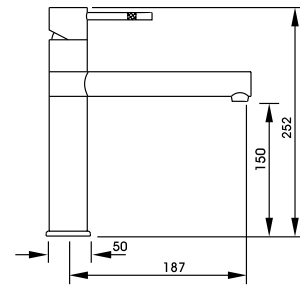
abode

The swan neck spout of the Czar gives it an elegant and contemporary design

Achieve precision water control at the touch of a single lever

An affordable and stylish option

Full specification documents can be found at [www.abodedesigns.co.uk](http://www.abodedesigns.co.uk)



Hydrus Single Lever

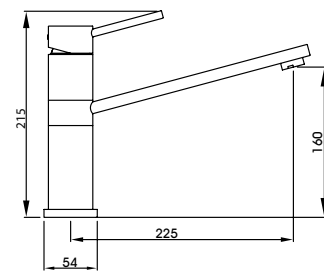
**AT1088**  
Chrome

**AT1089**  
Brushed Nickel



Effortlessly control water flow and temperature with this sleek top lever tap

Featuring etched knurling detail on the handle, allowing for better grip but also adding attractive detail



Specto Single Lever

**AT1224**  
Chrome

**AT1225**  
Brushed Nickel



Subtle sweeping design with soft lines and flat planes

Single handed control at the flick of a wrist

Standing at 160mm the Specto is great for compact kitchens with a smaller sink where space is at a premium

Full specification documents can be found at [www.abodedesigns.co.uk](http://www.abodedesigns.co.uk)



Image shows the Hydrus Single Lever in Chrome

## MONOBLOCS

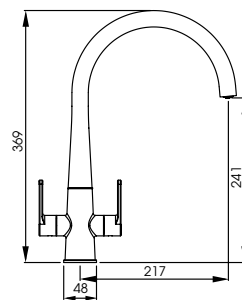
**A monobloc allows for complete symmetry for some of the most elegant tap designs.**

Function and design are perfectly balanced in this range. We are confident you'll find the perfect finishing touch to your kitchen with an Abode monobloc mixer.





Image shows the Coniq R Monobloc in Polished Copper



Coniq R

**AT2123**  
Chrome



abode  
distinctly

Stylish and contemporary conical style utilising advanced hydroforming manufacturing techniques

Smooth, rotating swan necked spout, with integrated aeration hidden from view with a cache aerator

Four hardwearing finishes available, including the durable and striking matt black and polished copper finishes



**AT2124**  
Brushed Nickel



**AT2125**  
Matt Black



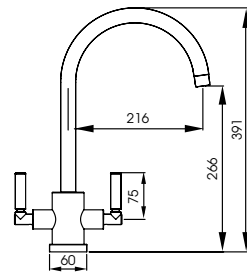
**AT2126**  
Polished Copper

Full specification documents can be found at [www.abodedesigns.co.uk](http://www.abodedesigns.co.uk)

Seeing is believing when it comes to the Atlas family. This best selling, sturdy monobloc has a brass construction so you can immediately appreciate the amount of material and craftsmanship that's gone into its design.

Atlas  
Monobloc

**AT1053**  
Chrome



A combination of sophisticated modern styling and engineering excellence. The level of detail makes for a truly inspiring design to suit any kitchen style

Style, maximum performance and quality assurance embodied

This popular model is also available as an Aquifier Filter tap. See page 272 for details



**AT1054**  
Brushed Nickel



**AT2097**  
Matt Black



**AT2096**  
Brushed Brass

Full specification documents can be found at [www.abodedesigns.co.uk](http://www.abodedesigns.co.uk)



Image shows the Belfast Ceramic Sink and Atlas Monobloc in Matt Black

Atlas  
Quad

**AT2166**  
Chrome



A quad spout addition to our best selling Atlas monobloc family

This sturdy monobloc has a solid brass construction, you can immediately appreciate the amount of material and craftsmanship that's gone into its design

Style, performance and maximum quality assurance embodied

Opt for this quad spout version in one of four available finishes to add a serious style statement to your kitchen design



**AT2167**  
Brushed Nickel



**AT2169**  
Matt Black



**AT2168**  
Brushed Brass

Full specification documents can be found at [www.abodedesigns.co.uk](http://www.abodedesigns.co.uk)

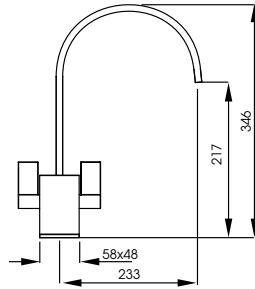


Image shows the GR15 1.0 bowl in Black Metallic Granite and Atlas Quad in Brushed Nickel



Atik  
Monobloc

**AT1148**  
Chrome



Bold and contemporary styling. Pair this bold tap with a traditional styled sink for a truly distinctive look

Achieve a unique look with the slimline squared swan spout

Three finishes available, including the durable and striking, powder coated matt black finish

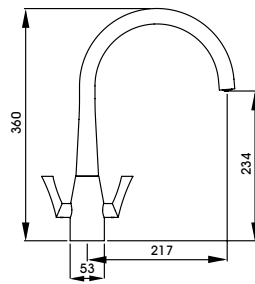


Fluid  
Monobloc

**AT1169**  
Chrome



abode  
distinctly



The name says it all. Fluidity of the design lines is the essence of this collection

Distinctive handle styling to add eye-catching detail to your kitchen design

Equally at home in classic or contemporary kitchen interiors alike



**AT1170**  
Brushed Nickel

Full specification documents can be found at [www.abodedesigns.co.uk](http://www.abodedesigns.co.uk)

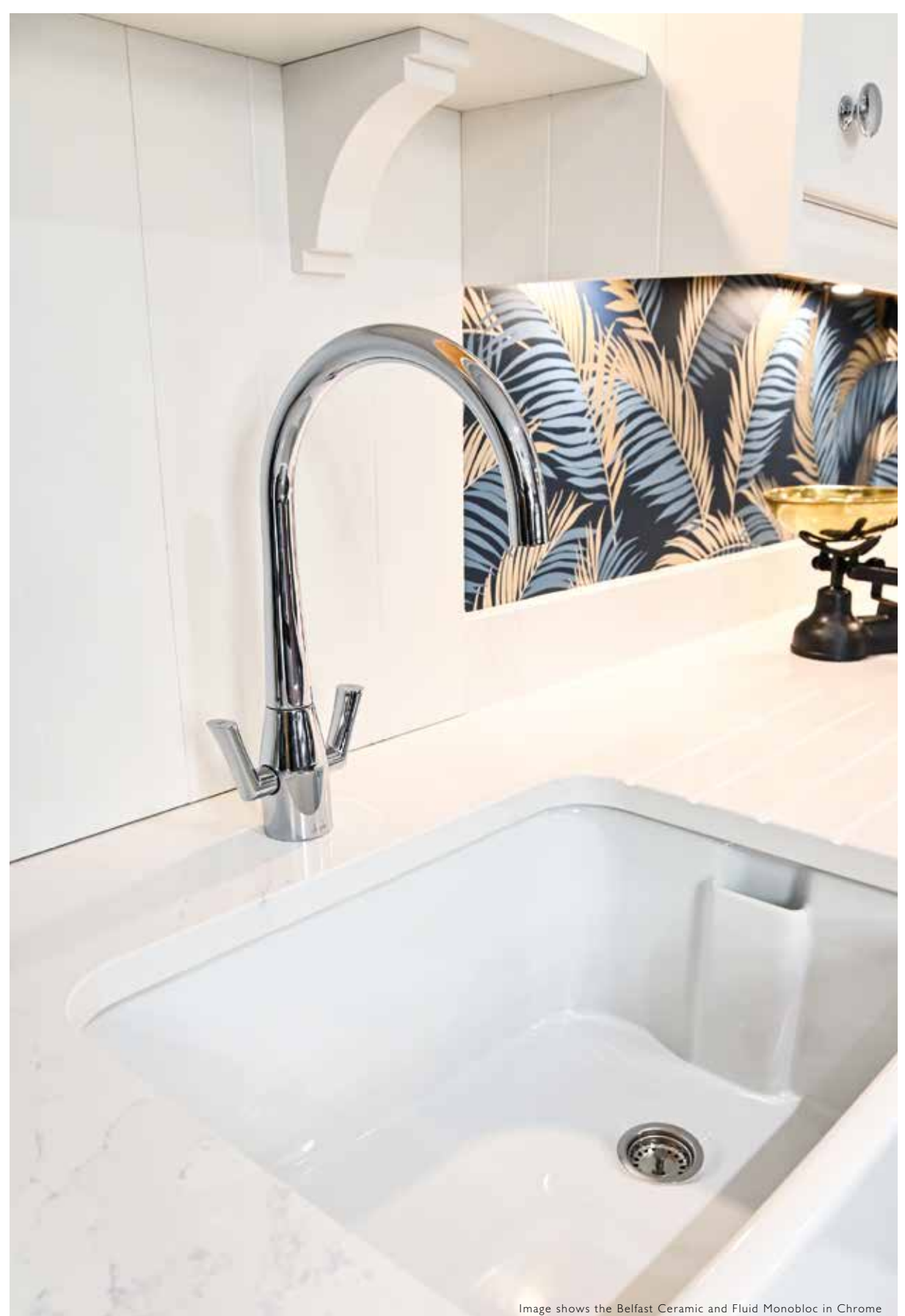
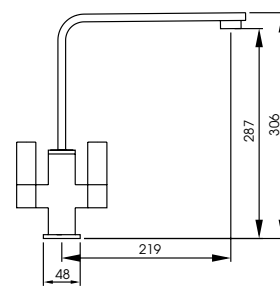


Image shows the Belfast Ceramic and Fluid Monobloc in Chrome



Image shows the Matrix R15 1.5 Bowl and Quantic Monobloc in Chrome



Quantic  
Monobloc

**AT2070**  
Chrome



abode  
distinctly

Contemporary styling perfectly blending round and square forms

Classic monobloc design which is easy to operate with a simple movement.

The tap spout will smoothly swivel between sink bowls



**AT2105**  
Matt Black

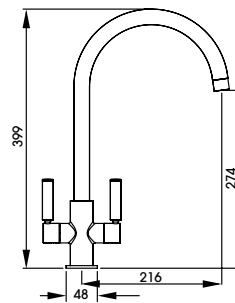


**AT2182**  
Brushed Brass

Full specification documents can be found at [www.abodedesigns.co.uk](http://www.abodedesigns.co.uk)



Image shows the Milford 1.5 Bowl and Globe Monobloc in Brushed Brass



Globe Monobloc

**AT2138**  
Chrome



Perfectly balanced. A classic looking monobloc design sure to provide the perfect finishing touch in a variety of kitchen designs

Contemporary handle styling with hot and cold indicators on the top of each handle

Choose from four of our most popular finishes



**AT2139**  
Brushed Nickel



**AT2141**  
Matt Black

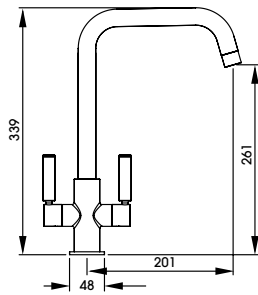


**AT2140**  
Brushed Brass

Full specification documents can be found at [www.abodedesigns.co.uk](http://www.abodedesigns.co.uk)

Globe Quad  
Monobloc

**AT2142**  
Chrome



A contemporary twist. The addition of a quad spout gives this sleek design a modern edge

Contemporary handle styling with hot and cold indicators on the top of each handle

Four finishes to choose from



**AT2143**  
Brushed Nickel



**AT2145**  
Matt Black

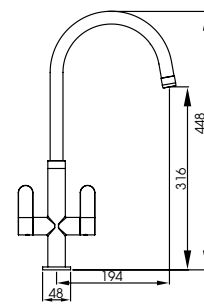


**AT2144**  
Brushed Brass

Full specification documents can be found at [www.abodedesigns.co.uk](http://www.abodedesigns.co.uk)



Image shows the Globe Quad Monobloc in Matt Black



Linear Nero  
Monobloc

**AT1184**  
Chrome & Black



abode

Bold and contemporary styling with a tall swan spout for great practicality

Durable and striking powder coated matt black detail contrasting luxurious chrome

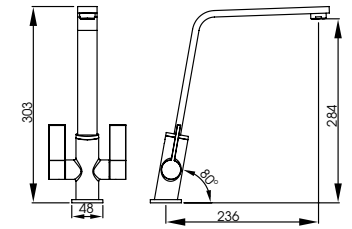
Full specification documents can be found at [www.abodedesigns.co.uk](http://www.abodedesigns.co.uk)



Linear Flair Monobloc

**AT1220**  
Chrome

**AT1221**  
Brushed Nickel



The 80-degree angle on the tap body results in a perfectly sloped design

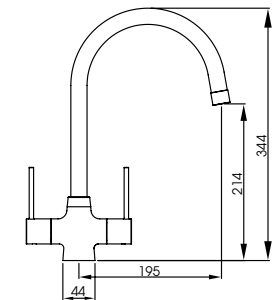
Contemporary spout and handle styling makes for a striking addition to any modern kitchen



Nexa Monobloc

**AT1222**  
Chrome

**AT1223**  
Brushed Nickel

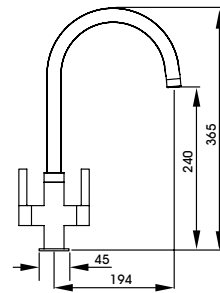


Slim, long-stem levers and a swan style spout make the Nexa elegant and easy to operate

Affordable, yet distinct design

Pico  
Monobloc

**AT1226**  
Chrome



Elegantly styled monobloc with discreet hot and cold indicators on the handles

Four finishes available for design matching to key kitchen accessories/appliances

Pico features a simple yet stunning handle design to compliment the overall look



**AT1227**  
Brushed Nickel



**AT2095**  
Matt Black



**AT2045**  
Brushed Brass

Full specification documents can be found at [www.abodedesigns.co.uk](http://www.abodedesigns.co.uk)

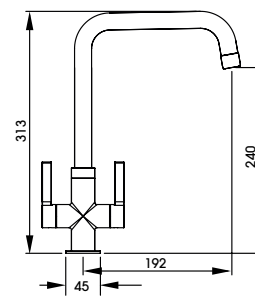


Image shows the Oriel 1.5 Bowl in Black Granite and Pico Monobloc in Matt Black





Image shows the Milford 1.5 Bowl and Pico Quad in Brushed Brass



Pico  
Quad

**AT2134**  
Chrome



Quad spout version of the popular long standing Pico range  
 Keeping the key design details of Pico, with the contemporary lift  
 the quad spout options gives  
 Four finishes available to perfectly complement key kitchen  
 accessories/appliances



**AT2135**  
Brushed Nickel



**AT2137**  
Matt Black



**AT2136**  
Brushed Brass

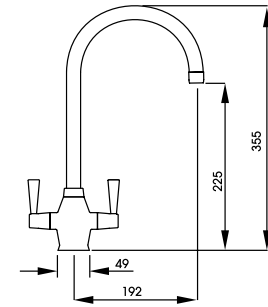
Full specification documents can be found at [www.abodedesigns.co.uk](http://www.abodedesigns.co.uk)



Astral Monobloc

**AT1156**  
Chrome

**AT1157**  
Brushed Nickel



Classic styling suitable for contemporary and traditional settings alike

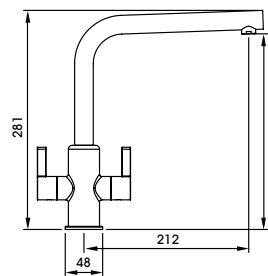
The distinctive body of the Astral is framed by the elegant swan spout and tapered handles



Althia Monobloc

**AT1256**  
Chrome

**AT1257**  
Brushed Nickel



The blend of square and round forms gives the Althia its distinctive edge

Refined handle styling for optimum ease of use

Pair with a sink with distinctive drainer detailing for a striking effect



Image shows the Astral Monobloc in Brushed Nickel

## PULL OUT & PROFESSIONAL TAPS

If you have the water pressure capability, a pull-out tap should not be overlooked. The cost may be slightly more up-front than a standard tap but the benefits over time will more than justify this.

The addition of a pull-out tap to the kitchen will make daily tasks such as pan filling, dish rinsing, food preparation and sink bowl cleaning that much simpler. Ideal for the keen cook or busy family household.

The range consists of two different types of pull out tap; a true pull out and a pull around tap. On a true pull out, the hose is discreetly hidden inside the tap and allows the user to pull the hose out to its full set length. A pull around tends to be a professional style tap in which the hose is visible on the external of the tap and held in a handspray holder located on the end of the extension bar.

In this range you'll find some products with an additional spray function which is operated by pressing a button on the end of the spout. This button simply changes the flow of the water from the standard to a powerful spray.

Our range of professional taps offer the manoeuvrability and features detailed above whilst being a statement piece in the kitchen.



Image shows the Tubist T in Brushed Nickel

See our stainless steel range for pull out and professional taps constructed from solid stainless steel.

Building on the success of the Tubist collection this uniquely styled tap adds an intuitive, ergonomic spray functionality in addition to the normal aerated water flow. Ideally suited to those looking for improved practicality without compromising on style, the Tubist T will be as easy in the hand as it is on the eye.

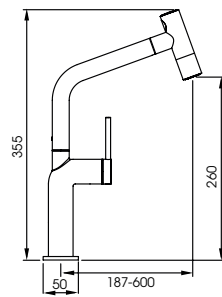
NEW

Tubist T  
Pull Out Spray

AT2190  
Chrome



abode  
distinctly



Ergonomic 'T' spray functionality for effortless flicking between standard and spray settings

*Cool touch* sprayhead for hot spraying practicality

*Cold-start, ceramic disc technology:* Mitigates unnecessary boiler operation and removes handle-to-wall interference

*Bubble-Tec* aerated water for improved water efficiency and reduced splashing

*Supple-flex* hose for enhanced pliability with 60cm reach, permitting access to the corners of the largest format sinks



AT2191  
Brushed Nickel



AT2192  
Matt Black



TAPS

PULL OUT & PROFESSIONAL 215

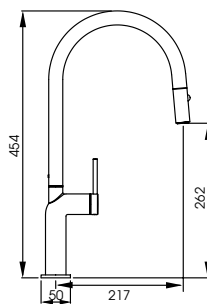
Image shows the Tubist T in Matt Black

Full specification documents can be found at [www.abodedesigns.co.uk](http://www.abodedesigns.co.uk)

abode



Image shows the Tubist Single Lever Pull Out in Matt Black



Tubist Single Lever  
with pull out spray

**AT2130**  
Brushed Nickel



Modern European styling lends everything to the curvaceous and organic form of Tubist

Using cold start valve technology, the environmentally friendly design will help save heat and wasted energy

Integrated pull down spray function, offering full or spray water functions

Three finishes available: Brushed Nickel, Matt Black & Polished Copper



**AT2131**  
Matt Black

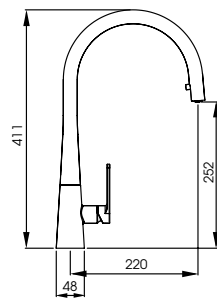


**AT132**  
Polished Copper

Full specification documents can be found at [www.abodedesigns.co.uk](http://www.abodedesigns.co.uk)

Coniq R  
Single Lever Pull Out

**AT2119**  
Chrome



Stylish and contemporary conical style utilising advanced hydroforming manufacturing techniques

Smooth, rotating swan necked spout with integrated pull down weighted spray, with integrated aeration hidden that disappears when put back into place

Four hardwearing finishes available, including the durable and striking matt black and polished copper finishes



**AT2120**  
Brushed Nickel



**AT2121**  
Matt Black



**AT2122**  
Polished Copper

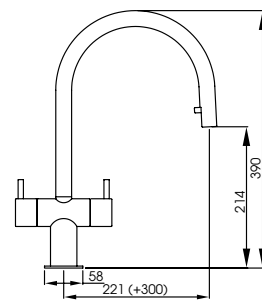
Full specification documents can be found at [www.abodedesigns.co.uk](http://www.abodedesigns.co.uk)



Image shows the Matrix R0 Large Single Main Bowl and Coniq R Single Lever Pull Out in Brushed Nickel



Image shows the Hesta Monobloc Pull Out in Brushed Nickel



Hesta Monobloc  
Pull Out

**AT1205**  
Chrome



abode  
distinctly

Contemporary monobloc with hidden functionality, allowing easy cleaning of those hard to reach areas

Pull out formed from a grey Nylon hose. Set the pullout length you require using the counterbalance weight under the sink



Discreet pull out hose provides practicality without detracting from the minimal design

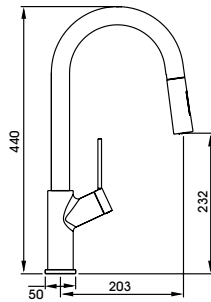


**AT1206**  
Brushed Nickel

Full specification documents can be found at [www.abodedesigns.co.uk](http://www.abodedesigns.co.uk)

Virtue Nero Pull Out  
with spray

**AT1244**  
Chrome



The contrasting black flexible spout makes it the perfect choice  
for coordinating with other elements in the kitchen

With the added functionality of a pull-out hose with spray for  
those harder to reach places

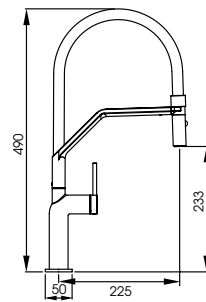
The unique 'V' shaped body and handle design of the Virtue  
tap gives it a truly iconic look







Image shows the Tubist Professional in Matt Black



Tubist Professional  
pull around with  
detachable spray

**AT2133**  
Matt Black



Taking its design cues from the Tubist range, the Professional tap offers greater versatility with a magnetic snap back control for the spout

Using cold start technology, this environmentally design will help save wasted heat and energy

Pull around hose feature, with spray and full flow water features

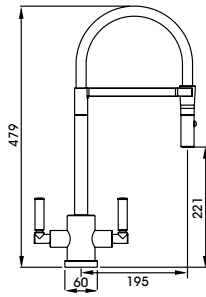
Durable silicone hose cover in black

Available in stylish and hardwearing matt black finish



Full specification documents can be found at [www.abodedesigns.co.uk](http://www.abodedesigns.co.uk)

In keeping with the solid geometric form of the Atlas collection, the professional range have the added functionality of a pull around spray.



Atlas Professional Monobloc pull around with spray

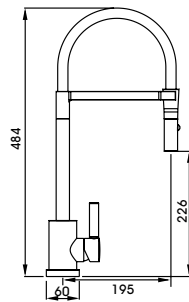
**AT1247**  
Chrome

**AT1248**  
Brushed Nickel



Perfectly complement the décor of your kitchen with chrome or brushed nickel options with a black hose

Distinctive monobloc option



Atlas Professional Single Lever pull around with spray

**AT1249**  
Chrome

**AT1250**  
Brushed Nickel

**AT2100**  
Matt Black



As well as the finish options above, you can also choose from a full matt black option with black hose

Simple to operate, energy efficient single lever option

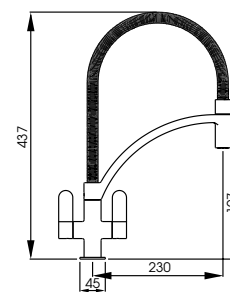
Full specification documents can be found at [www.abodedesigns.co.uk](http://www.abodedesigns.co.uk)



Image shows the Stainless Steel Belfast and Atlas Professional Single Lever in Matt Black



Image shows the Genio Semi-Professional Monobloc in Chrome



Genio Semi-Professional  
Monobloc pull around

**AT2071**  
Chrome



Semi-professional style mixer with detachable pull around spout feature, perfect for rinsing down and filling pans

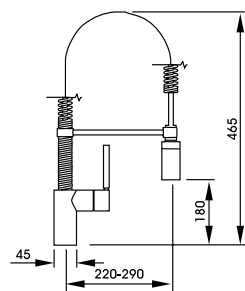
Metal flexible hose for a truly professional look

Now available in a striking power coated matt black finish



**AT2183**  
Matt Black

Full specification documents can be found at [www.abodedesigns.co.uk](http://www.abodedesigns.co.uk)



Ratio Professional  
pull out

**AT1115**  
Chrome



**abode**  
distinctly

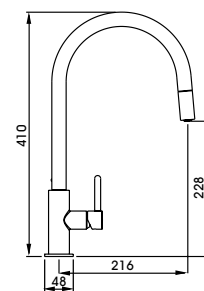
True functionality for ultimate flexibility, making cleaning and rinsing chores simple

Maintain the look and feel of a professional tap whilst retaining a relatively compact size

Full specification documents can be found at [www.abodedesigns.co.uk](http://www.abodedesigns.co.uk)



Image shows the Connekt Single Bowl and Althia Pull Out in Brushed Nickel



Althia  
Single Lever Pull Out

**AT1260**  
Chrome



The tall swan neck spout of the Althia pull out provides optimum flexibility, allowing you to reach into the corners of even the largest of sinks

Pull out formed from a grey Nylon hose. Set the pullout length you require using the counterbalance weight under the sink



The discreet pull out allows for a minimal design that maximises on both performance and style

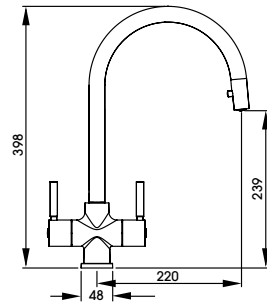


**AT1261**  
Brushed Nickel

Full specification documents can be found at [www.abodedesigns.co.uk](http://www.abodedesigns.co.uk)

Zest  
Monobloc Pull Out

**AT2164**  
Chrome



A balanced monobloc design with the added benefit of inbuilt functionality

Zest has a hidden pull out. The discreet hose is hidden away and located by a small toggle at the back of the spout maintaining the design lines of the product

The perfect helping hand for common rinsing tasks



The discreet pull out allows for a minimal design that maximises on both performance and style



**AT2165**  
Brushed Nickel

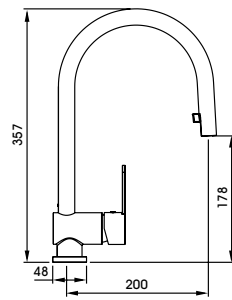
Full specification documents can be found at [www.abodedesigns.co.uk](http://www.abodedesigns.co.uk)



Image shows the Neron 1.0 Bowl and Zest Monobloc Pull Out in Chrome.

Czar  
Single Lever Pull Out

**AT1240**  
Chrome



This simple single lever design features a discreet grey Nylon pull out hose. The pull out length can be set as required using the counterbalance weight under the sink

Smooth and effortless single lever control

Supplied complete with flexible tail pipes for fast and simple fitting



Discreet pull out hose provides practicality without detracting from the minimal design

Full specification documents can be found at [www.abodedesigns.co.uk](http://www.abodedesigns.co.uk)



Image shows the Czar Single Lever Pull Out in Chrome



Image shows the Globe Professional in Brushed Nickel



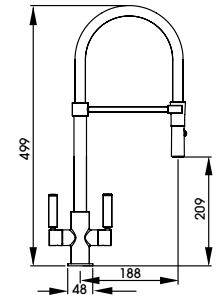
Globe Professional

**AT2150**  
Chrome

**AT2151**  
Brushed Nickel



abode



The same slim and sleek Globe body with added functionality

Pull around hose with spray feature integrated

Contrasting, durable silicone hose cover

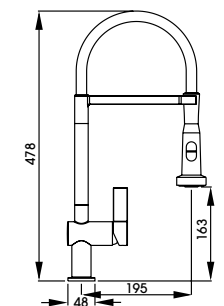


Ophelia Professional  
pull around with spray

**AT2074**  
Chrome



abode



Features pull around, switchable spray function, perfect for rinsing and cleaning tasks

Professional style, an ideal kitchen addition for the keen cook or baker

Ceramic disc valve technology for ultra smooth water flow and temperature control

Full specification documents can be found at [www.abodedesigns.co.uk](http://www.abodedesigns.co.uk)



## STAINLESS STEEL TAPS

Stainless steel as a material has several well loved benefits including:

It is a closer match to stainless steel sinks and appliances

The material itself is 100% recyclable

Stainless steel taps have no coating, they are just polished and brushed

It is more durable and less likely to scratch, small scratches can be brushed out

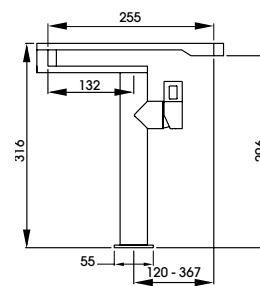
Stainless steel is a naturally hygienic material



Image shows the Stalto Professional



Image shows the Matrix R15 1.5 Bowl Sink and Axial Pot Filler



Axial  
Pot Filler

**AT2078**  
Stainless Steel



abode  
distinctly

- Pot filler style functionality in a simple to fit deck mounted format
- Easily reach each corner of the sink or fill large pans from the worktop rather than in the bowl due to multiple swiveling spout joints
- Solid 304 stainless steel construction
- Unique, innovative and practical design
- Delivers hot, cold & mixed temperature water

The Axial can be deck or sink mounted



Full specification documents  
can be found at  
[www.abodedesigns.co.uk](http://www.abodedesigns.co.uk)

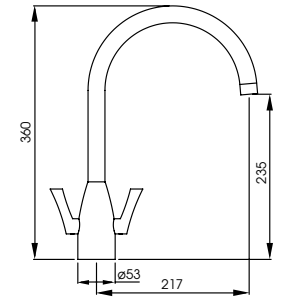


Image shows the Propus Single Lever



Airo Monobloc

**AT2075**  
Stainless Steel



Beautiful organic curves created from solid stainless steel this elegant and durable, monobloc can sit in modern and traditional kitchens alike

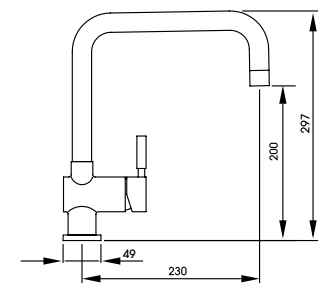
Quarter turn handle action for precise flow control

Anti-splash spout design



Propus Single Lever

**AT1070**  
Stainless Steel



Architectural inspired design

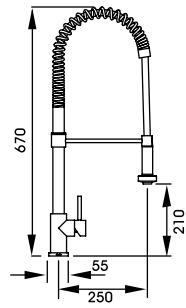
Smooth single lever control

A clean lined, contemporary styled mixer tap. The perfect pairing for any stainless steel or granite sink

Full specification documents can be found at [www.abodedesigns.co.uk](http://www.abodedesigns.co.uk)

Stalto Professional  
pull out with spray

**AT1199**  
Stainless Steel



Standing tall at 670mm, the Stalto is a truly showstopping piece in any kitchen

Coiled construction with a balanced spray head and integrated spray button

The ultimate choice for the keen cook or aspiring chef

Full specification documents can be found at [www.abodedesigns.co.uk](http://www.abodedesigns.co.uk)

abode



TAPS

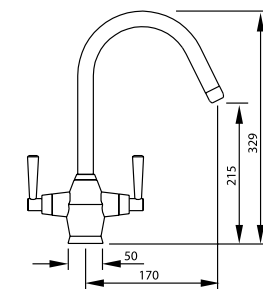
STAINLESS STEEL 247

Image shows the Stalto Professional



Taura Monobloc

**AT1137**  
Stainless Steel



An elegant design featuring soft, smooth curves

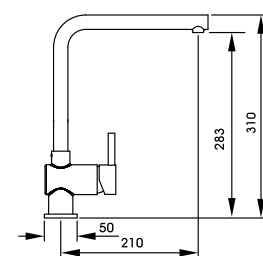
A traditional style which boasts the hygienic and practical properties of stainless steel

Discreet hot and cold indicators on the handle ends



Quala Single Lever

**AT1198**  
Stainless Steel



Distinctive L shaped spout design for a contemporary, minimalist look

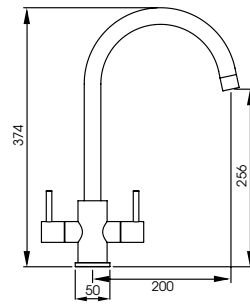
Smooth single lever control

Would sit perfectly with any style of sink

Full specification documents can be found at [www.abodedesigns.co.uk](http://www.abodedesigns.co.uk)

Focal  
Monobloc

**AT2177**  
Stainless Steel



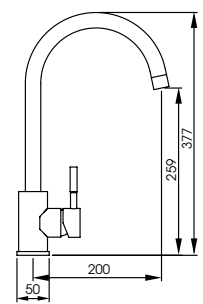
Balanced, contemporary monobloc styling with the well-loved benefits of stainless steel

Ceramic disk valve technology for super smooth flow and temperature control

Fitted with an anti-splash aerator for a premium finish

Sway  
Single Lever

**AT2178**  
Stainless Steel



Contemporary side single lever styling featuring soft, smooth curves

A sleek swan neck design which boasts all the benefits of stainless steel alongside

Ceramic cartridge technology for smooth flow and temperature control

## TRADITIONAL TAPS

Inspired by the classic era of British design and manufacturing, this refined selection of distinctive traditional mixertaps will bring truly classic style to your kitchen.

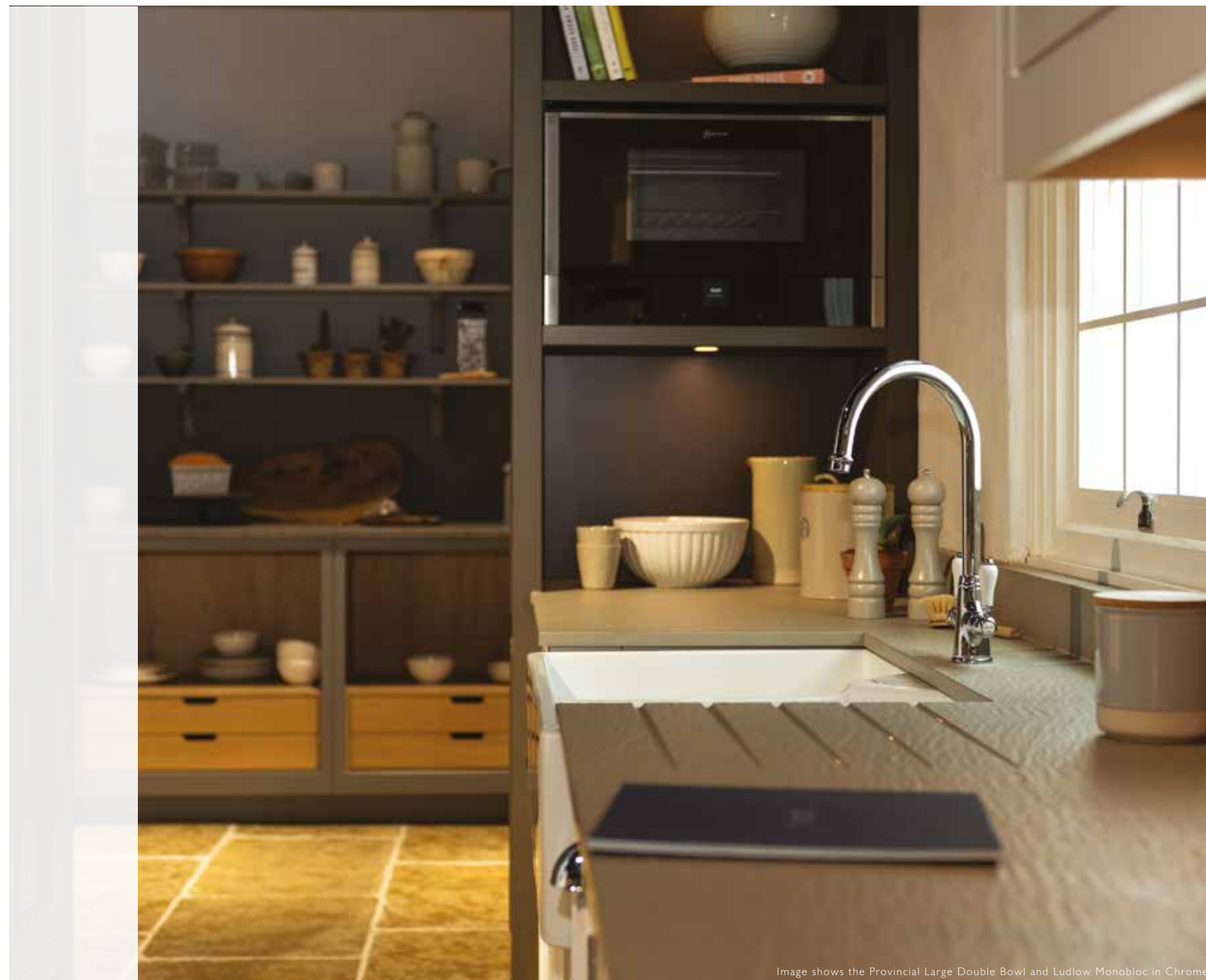
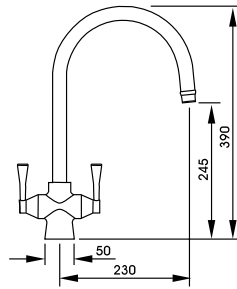


Image shows the Provincial Large Double Bowl and Ludlow Monobloc in Chrome

Gosford  
Monobloc

**AT1019**  
Chrome



A tall sweeping swan neck spout and smooth tapered handles fuse with the symmetrical body to create a tap of modern-day elegance

Traditional style hot and cold indicators on the top of the handles

This model is also available as an Aquifer Filter tap. See page 274 for details



**AT1020**  
Brushed Nickel



**AT1022**  
Antique Brass

Full specification documents can be found at [www.abodedesigns.co.uk](http://www.abodedesigns.co.uk)

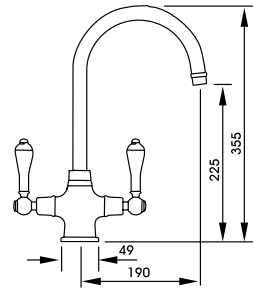
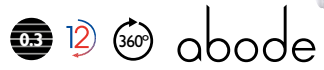


Image shows the Gosford Monobloc in Antique Brass



Ludlow  
Monobloc

**AT1026**  
Chrome



Timeless classic Victorian inspired design

Ceramic style handles with traditional hot and cold indicators  
on the end of each handle

A balanced combination of age-old design inspiration with  
modern engineering technology



**AT1028**  
Antique Brass



**AT1216**  
Brushed Nickel

Full specification documents can be  
found at [www.abodedesigns.co.uk](http://www.abodedesigns.co.uk)



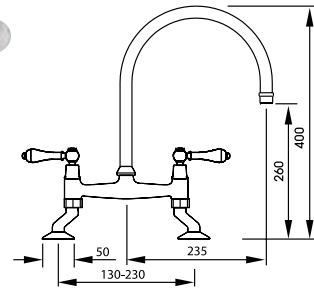
Image shows the Ludlow Monobloc in Antique Brass

Ludlow  
Bridge

**AT1029**  
Chrome



abode



Timeless classic Victorian inspired design

Ceramic style handles with traditional hot and cold indicators  
on the end/top of each handle

A balanced combination of age-old values with modern  
engineering technology



**AT1031**  
Antique Brass



**AT1217**  
Brushed Nickel

Full specification documents can be  
found at [www.abodedesigns.co.uk](http://www.abodedesigns.co.uk)

abode



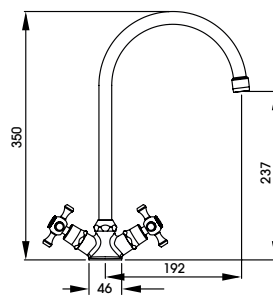
Image shows the Sandon Large Single Bowl and Ludlow Bridge in Antique Brass

TAPS

TRADITIONAL 259



Image shows the Milford 1.5 Bowl Ceramic and Burford Monobloc in Antique Brass



Burford Monobloc

**AT2170**  
Chrome



Inject simple, yet sophisticated traditional design into the kitchen with the Burford

The handles feature quarter turn ceramic disk valves for ease of use

Traditional hot and cold indicators feature on the cross handles

Available in three finishes including the popular Antique Brass



**AT2171**  
Brushed Nickel



**AT2172**  
Antique Brass

A classic continental design

Originating from France, the Melford's farmhouse styling proves a successful fusion of provincial design and modern engineering technology

Finished off with traditional hot and cold indicators on the handles and knurling detail on the spout

Revolve aerator supplied as standard

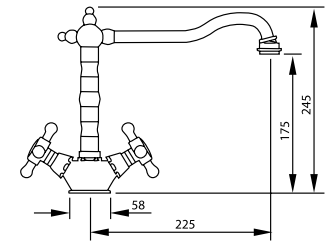


### Melford Monobloc

**AT1041**  
Chrome

**AT1043**  
Antique Brass

**AT1044**  
Brushed Nickel

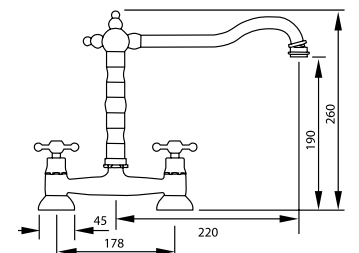


### Melford Bridge

**AT1045**  
Chrome

**AT1047**  
Antique Brass

**AT1048**  
Brushed Nickel



Full specification documents can be found at [www.abodedesigns.co.uk](http://www.abodedesigns.co.uk)

Our **CLASSICALLY ABODE** range of products showcases a truly distinctive product collection which we felt could only be done justice by allowing it to stand alone.

The products in this bespoke collection boast classic styles and premium quality through unique manufacturing processes.

CLASSICALLY

abode

### BROMPTON MONOBLOC

All our shower heads are made of the difference and the Brompton Monobloc shower head is no exception. It's a classic, elegant design that will stand the test of time. The design is a blend of classic style and modern functionality, with the shower head being adjustable and the shower head being made of high quality materials.



AT3012 Chrome  
£278.00



AT3014 Pewter  
£348.00



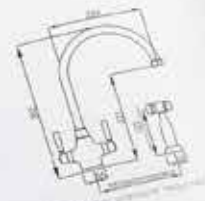
Max 2 x 200mm shower head



AT3013 Chrome  
£451.00



AT3015 Pewter  
£495.00



Max 2 x 200mm shower head

abode



Scan the QR code to access the latest digital copy of the Classically Abode brochure.

## CLASSICALLY ABODE collection overview



Astbury Bridge  
in Chrome



Bayenne Single Lever  
in Chrome



Brompton 3 Part Mixer  
in Chrome

### The Astbury Collection

Features real ceramic handles to provide the optimum, premium finishing touch to your traditional kitchen design

Neoperl® Anti-Splash Aerators provide a smooth water supply

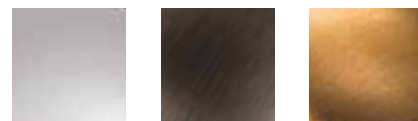
Ceramic Disc Valve Cartridge technology for effortless use and Pre-fitted Flexi Tail Pipes saves on fitting time

Handbrushed PVD Coating ensures optimum longevity of the finish



**Models:**  
Single Lever  
Monobloc (shown above)  
Bridge  
3 Part Mixer  
3 Part Mixer with Handspray

#### Finishes:



CHROME

PEWTER

FORGED  
BRASS

### The Bayenne Collection

Sophistication and distinctive details of classic Edwardian design epitomise the premium Bayenne family

Neoperl® Anti-Splash Aerators provide a smooth water supply

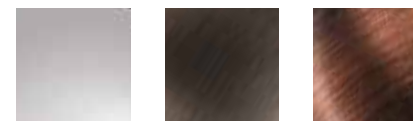
Ceramic Disc Valve Cartridge technology for effortless use and Pre-fitted Flexi Tail Pipes saves on fitting time

All products available in Century Copper finish



**Models:**  
Single Lever  
Monobloc  
Bridge (shown above)  
3 Part Mixer  
3 Part Mixer with Handspray

#### Finishes:



CHROME

PEWTER

CENTURY  
COPPER

### The Brompton Collection

This simple elegant collection is the perfect addition to a wide range of kitchen styles. If you are looking for premium quality and classic design, opt for the Brompton range

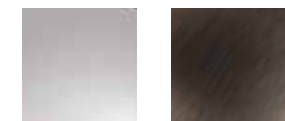
Neoperl® Anti-Splash Aerators provide a smooth water supply

Ceramic Disc Valve Cartridge technology for effortless use and Pre-fitted Flexi Tail Pipes saves on fitting time



**Models:**  
Single Lever  
Monobloc  
Bridge  
3 Part Mixer (shown above)  
3 Part Mixer with Handspray

#### Finishes:



CHROME

PEWTER

# AQUIFIER™ WATER FILTER TAPS

The Abode Aquifier range features popular designs from our tap range as well as exclusive designs with the added benefit of a dedicated filtered water function – straight from the tap.

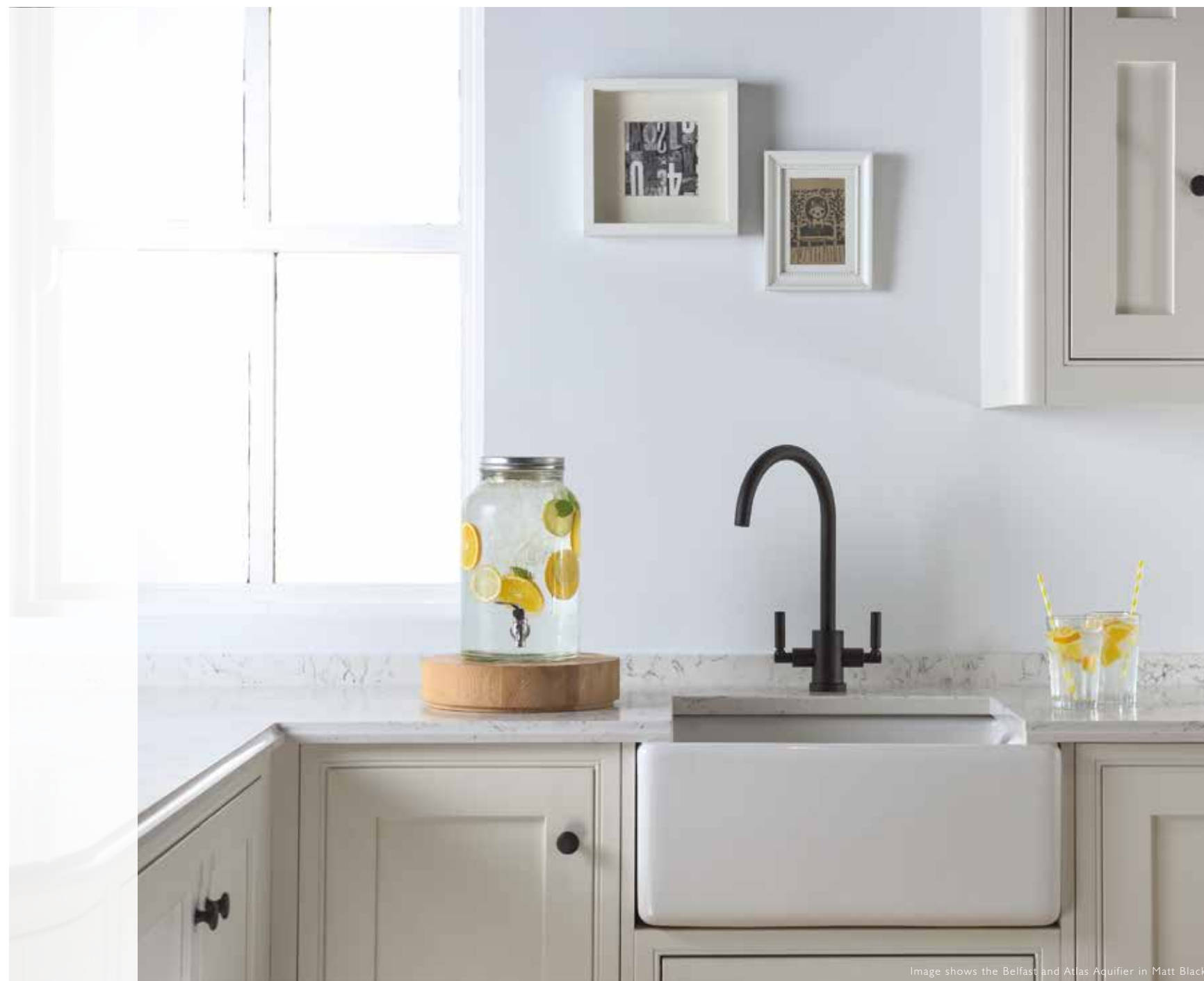


Image shows the Belfast and Atlas Aquifier in Matt Black

## WHAT ARE THE BENEFITS OF A WATER FILTER TAP?



**WATER QUALITY:** An Aquifier tap or Swich device filters particulates from water, reduces the taste and odour of chlorine and reduces hardness from the water.



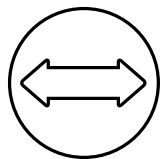
**HEALTH:** Having filtered cold water on tap will hopefully encourage the consumption of more water. Fill a reusable water bottle each day directly from the tap.



**ENVIRONMENT:** By removing the need for bottled mineral water, every home with an Aquifier product is doing their bit for the environment by reducing single use plastic consumption.



**COST:** If bottled mineral water is a frequent purchase in your household you can save considerable amounts each year by switching to an Aquifier or Swich product.



**SPACE SAVING:** If you previously had a water filtration jug or bought bottled water, just think how much space you can free up in the fridge.



**APPLIANCE HEALTH:** If you live in an area with particularly hard water you will notice that the kettle suffers as a result of the limescale build up over time. Fill your kettle with filtered water and prolong its life.

Find out more on the website: <https://www.abodedesigns.co.uk/faqs/aquifier>

## HOW DOES AN AQUIFIER PRODUCT WORK?



## WHY IS IT IMPORTANT TO KEEP UP WITH REPLACEMENT FILTERS?

It is simple to maintain your filter, it sits in a bracket either at the back or on the side of the inside of the base cabinet below the sink. It is easy for anyone to replace using our simple, fast and secure 'SafeLock' system.

We offer a dedicated filter reminder service – we'll send you a reminder by email or post each time your filter is due for renewal.

Filters are easy to buy as singles or packs from [www.abode-shop.co.uk](http://www.abode-shop.co.uk) when the time comes to replace.

It's important to change the filter at the recommended intervals to ensure the consistency of the supply of fresh, filtered drinking water.

**USAGE:** The capacity of the filter units for Aquifier and Swich products vary, these range between 1000L and 6000L (dependent on incoming water quality and usage).

We have both Classic and High Resin filters available, specifically tailored for use in soft water or hard water areas respectively.

If you live in a soft water area the filter will be used up much slower than one in a hard water area (based on a standard average usage).

We recommend that our filters are changed every 6 months on average. If you live in a hard water area or have a higher filtered water consumption, replacements every 3 months may be beneficial.



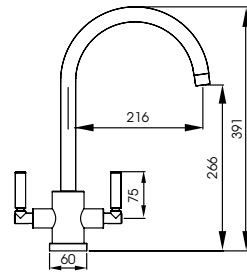
RECYCLE SCHEME AVAILABLE

The Safelock high resin filter is included as part of the FREE Abode filter recycle scheme.



Atlas  
Aquifier

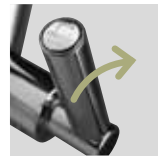
**AT2003**  
Chrome



Maintain the sleek and popular style of the Atlas tap with the addition of filtered cold water

Cold, hot and pure indicators on the top of the handles

Four finishes available, achieve the perfect finishing touch with the benefit of added functionality



Push the cold lever back for filtered water



Full filter starter kit supplied



**AT2004**  
Brushed Nickel



**AT2099**  
Matt Black



**AT2098**  
Brushed Brass



TAPS

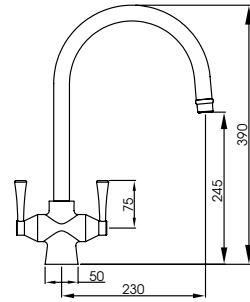
WATER FILTER 273

Image shows the Atlas Aquifier in Chrome

Full specification documents can be found at [www.abodedesigns.co.uk](http://www.abodedesigns.co.uk)  
For replacement filters, please visit [www.abode-shop.co.uk](http://www.abode-shop.co.uk)

Gosford  
Aquifier

**AT2005**  
Chrome



The classic Gosford design attributes are maintained but combined with the added benefit of Abode's unique integrated water filtration technology

The flow of hot, cold and filtered water goes through the same spout and using just two handles

Traditionally styled hot, cold and pure indicators on top of the handles



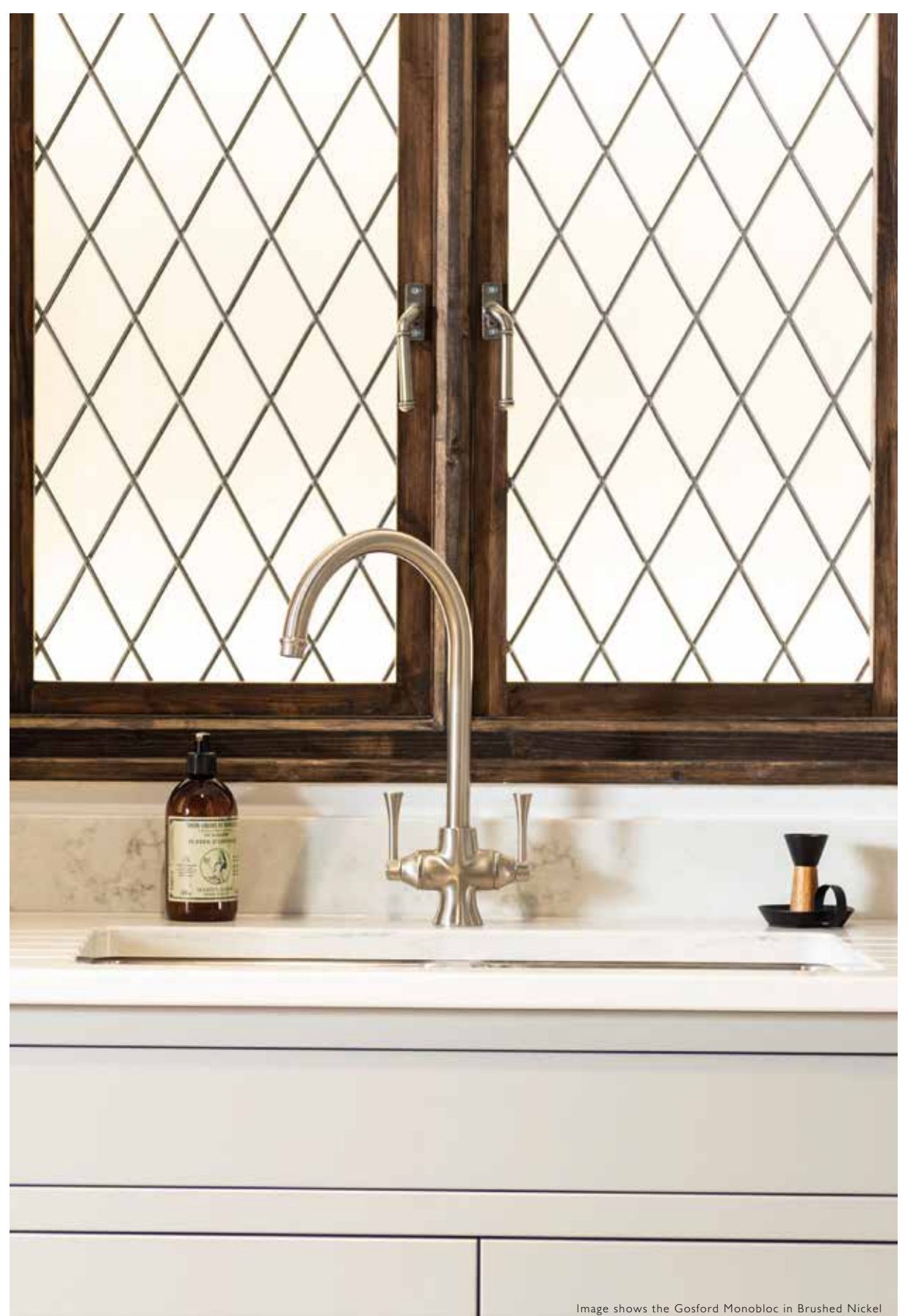
Push the cold lever back for filtered water



Full filter starter kit supplied



**AT2006**  
Brushed Nickel



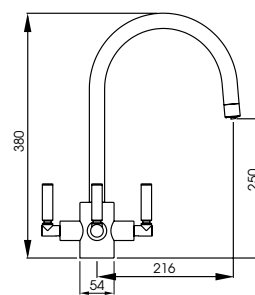
TAPS

WATER FILTER 275

Image shows the Gosford Monobloc in Brushed Nickel



Image shows the Sandon 1.5 Bowl and Orcus 3 Way Aquifier in Chrome

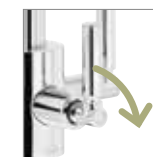


Orcus 3 Way Aquifier

**AT2072**  
Chrome



- Dedicated hot, cold and filter control handles (filter control at the front of the tap)
- Dedicated filtered water pathway (doesn't share with hot & cold)
- Anti-splash spout design



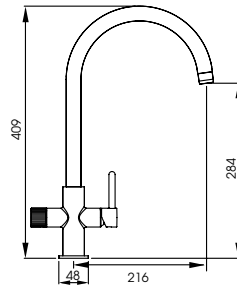
Turn the middle lever clockwise for filtered water



Full filter starter kit supplied

Puria  
Aquifier

**AT2042**  
Chrome



Abode lead the market in innovative filter water taps and the latest addition to the range is no exception

It has a single lever cold start valve offering smooth flow and temperature control. Filtered drinking water is delivered through a separate channel delivering refreshingly fresh filtered water.

Modern engineering makes this probably the slimmest filter tap available today

Tall swan spout, with in built aeration keep filtered water and potable supplies separate



Rotate the filter lever back for filtered water



Full filter starter kit supplied



**AT2043**  
Brushed Nickel



**AT2044**  
Matt Black



TAPS

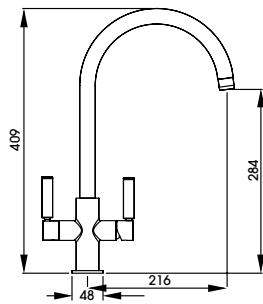
WATER FILTER 279

Image shows the Puria Aquifier in Matt Black

Full specification documents can be found at [www.abodedesigns.co.uk](http://www.abodedesigns.co.uk)  
For replacement filters, please visit [www.abode-shop.co.uk](http://www.abode-shop.co.uk)

Globe  
Aquifier

**AT2173**  
Chrome



Enjoy the design of the Globe monobloc with the addition of filtered cold water when you opt for this Aquifier tap

Filtered water indicator on the top of the left handle and tap body

Four finishes available, achieve the perfect finishing touch with the benefit of functionality built in



Full filter starter kit  
supplied



**AT2174**  
Brushed Nickel



**AT2176**  
Matt Black



**AT2175**  
Brushed Brass



TAPS

WATER FILTER 281

Image shows the Dune in Frost White Granite and Globe Aquifier in Chrome



# Introducing (sw)ich

*A revolution in filtered water technology*

## HOW DOES A SWICH PRODUCT WORK?

Convert **ANY** kitchen tap to one which delivers filtered water as well as the standard cold water supply

The easy way to get filtered water from any style of tap

Simple to install either through the worktop, or any standard sink 35mm tap hole or even in the sink cabinet

Easy to use, just turn to divert to the filtered water function and back again to the standard cold water supply

Can be installed alongside a new tap or retro-fit with an existing tap

Award winning, unique product design

MAKE THE SWITCH FROM BOTTLED WATER, SAVE MONEY AND THE ENVIRONMENT

See our cost saving infographic, video and supporting information at [www.abodedesigns.co.uk](http://www.abodedesigns.co.uk)

Scan to visit our YouTube channel for a selection of Swich videos.





-  RECYCLE SCHEME
-  FILTERED WATER
-  SPACE SAVING
-  REDUCE PLASTIC

FILTERED  
WATER  
FROM ANY TAP



Swich  
Round

0.5 hot 1.0 cold abode

[with classic filter]

**AT2050**

Chrome

**AT2051**

Brushed Nickel

**AT2106**

Matt Black

**AT2109**

Brushed Brass

**AT2201**

Beech Wood

[with high resin filter  
for harder water]

**AT2054**

Chrome

**AT2055**

Brushed Nickel

**AT2107**

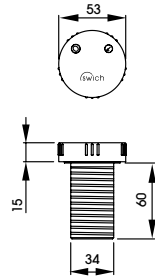
Matt Black

**AT2110**

Brushed Brass

**AT2202**

Beech Wood



Full filter  
starter kit  
supplied  
with each  
swich



Full specification documents can be found at [www.abodedesigns.co.uk](http://www.abodedesigns.co.uk)  
For replacement filters, please visit [www.abode-shop.co.uk](http://www.abode-shop.co.uk)



Improve the overall taste and quality of the drinking water from any tap by adding a Swich device

Swich is easy to install and use, simply twist the device to divert the cold water to refreshing, filtered water and back to unfiltered cold water as desired

Choose from an array of finishes to perfectly complement your tap and kitchen design

To ensure the perfect solution, choose from two filter options. Choose the Classic Filter for soft water areas and the High Resin filter for hard water areas to ensure maximum longevity of the filter

## HANDSPRAYS AND ACCESSORIES

<p>Handspray Rinse</p>  <p><b>AT1100</b> Chrome</p> <p><b>AT1101</b> Brushed Nickel</p> <p><b>0.5 min</b> <b>2.0 max</b></p>	<p>Axell Handspray Rinse</p>  <p><b>AT1107</b> Stainless Steel</p> <p><b>0.5 min</b> <b>2.0 max</b></p>	<p>Hendon Handspray</p>  <p><b>AT3040</b> Chrome</p> <p><b>AT3041</b> Pewter</p> <p><b>1.0 min</b> <b>2.0 max</b></p>	<p><b>AT3101</b> Forged Brass</p> <p><b>AT3103</b> Century Copper</p>
---	--	---	---

Note: All handsprays should be used in conjunction with a pressure reduction valve (not supplied)

A selection of useful, functional and practical accessories are available from Abode including pull out handsprays in a variety of contemporary and classic styles, flow limiting valves, fast fit tail pipes and spout attachments that bring additional functionality to your mixertap. It's the little things that make the difference.

<p>Flow Control Valve</p>  <p><b>AT1142</b> Brass</p>	<p>Tap Support Bracket</p>  <p><b>AX1011</b> Stainless Steel</p>
--	---

## WATER FILTER CARTRIDGES


<p>Aquifier Filter Cartridge</p>  <p><b>AT2002</b></p>	<p>Aquifier High Resin Filter Cartridge</p>  <p><b>AT2040</b></p> <p></p>	<p>PROBOIL.2X Filter Cartridge</p>  <p><b>PT1206</b></p> <p></p>
<p>PROBOIL3 Filter Cartridge</p>  <p><b>PT1024</b></p> <p></p>	<p>Swich Classic Filter Cartridge</p>  <p><b>AT2111</b></p>	<p>Swich High Resin Filter Cartridge</p>  <p><b>AT2112</b></p> <p></p>


Note: Replacement Aquifer/Swich filter cartridges can be bought from [www.abode-shop.co.uk](http://www.abode-shop.co.uk)  
Replacement Pronteau filter cartridges can be bought from [www.pronteau.co.uk](http://www.pronteau.co.uk)

<p>15mm Flow Restriction Valve 4 litres/minute</p>  <p><b>AB2434</b> to suit 15mm pipe fittings</p> <p><b>3 litres/minute</b> <b>AB2440</b> to suit 15mm pipe fittings</p> <p><b>2.0</b></p>	<p>15mm Flow Restriction Valve 6 litres/minute</p>  <p><b>AT2435</b> to suit 15mm pipe fittings</p> <p><b>2.0</b></p>	<p>1/2" Showerhead Flow Restriction Valve 6 litres/minute</p>  <p><b>AT2433</b> replaces any 1/2" shower hose seal</p> <p><b>1.0</b></p>
---	--	--

## AERATORS

<p>Revolve Aerator</p> <p>A swivelling joint that attaches to your existing spout</p>  <p><b>AT1060</b> Revolve Aerator</p>	<p>Jetspray Aerator</p>  <p><b>AT1140</b> Chrome Jet Spray</p>
--	---

 indicates taps suitable for this extra feature

 indicates taps suitable for this extra feature





## INDEX

### SINKS

Acton	70
Aspekt	52
Belfast	42
Connekt	76
Denton	38
Dune	54
Ixis	78
Matrix GR15	34
Matrix R0	16
Matrix R15	20
Matrix R50	24
Mikro	80
Milford	72
Neron	82
Oriel	58
Provincial	44
Sandon	46
Stainless Steel Belfast	28
Studio Compact	30
Trydent	86
Verve	88
Xcite	60
Zero	64

### TAPS

Accessories	286
Aerators	287
Agilis	162
Airo	245
Althia	176, 210, 232
Astbury	266
Astral	210
Atik	192
Atlas	170, 188, 190, 226, 272
Axial	242
Bayenne	267
Brompton	267
Burford	260
Coniq R	164, 186, 218
Coniq S	166
Czar	180, 236
Fluid	194
Focal	250
Fraction	152, 154, 156
Genio	228
Globe	178, 198, 200, 238, 280
Gosford	254, 274
Handsprays	286
Hesta	220
Hex	142, 144, 146, 148, 150
Hydrus	182
Linear Flair	204
Linear Nero	200
Ludlow	256, 258
Melford	262
New Media	172
Nexa	205
Orcus	276
Ophelia	239
Pico	206, 208
Prime	174
ProBoil.2X	136
ProBoil.4E	136
Professional 3 IN 1	114
Profile	126, 128
Project	130, 132
Propure	120, 122
Propus	244
Prostream	110
Prostyle	112
Prothia	104, 106
Protrad	108, 118
Province	134
Puria	278
Quala	249
Quantic	196
Ratio	230
Specto	182
Stalto	246
Sway	251
Swich	282, 284
Taura	248
Tubist	168, 214, 216, 224
Virtue Nero	222
Warranty & Care	290
Water Filter Cartridges	286
Zest	234

## WARRANTY

### COMPREHENSIVE WARRANTY

In the unlikely event that you should experience any defect in the materials or workmanship of your new

- Abode sink within 10 years of purchase
- Abode tap within 5 years of purchase
- ProBoil boiler within 2 years of purchase

The purchaser's sole remedy shall be the replacement (at the manufacturer's discretion) of all or any part of the product that is defective.

For the tap, all working parts and valves are guaranteed for a period of 5 years from date of purchase. Decorative surface finishes and O-rings are guaranteed for 1 year from the date of purchase provided that our advice concerning care has been observed and no scouring agents have been used.

This is provided that the sink, mixer or tap has been used for normal domestic purposes and that the care, installation and maintenance instructions have been observed. The warranty extends to the original purchaser only.

## CUSTOMER CARE

### CAUTION

Repeated release of boiling hot water directly into coloured sinks can in extreme cases cause crazing and even cracking. Therefore we recommend great care is taken not to release the water directly on to the sink surface at full temperature for extended periods.

### WATER REGULATIONS

All products should be installed in accordance with Local Water Bye Laws.

Visit [www.abodedesigns.co.uk](http://www.abodedesigns.co.uk) to search all products with a current WRAS approval.

Our ProBoil boilers store water at a maximum temperature of 98°C to conform to UK legislative limits. Spout exit temperatures will vary according to environmental changes and usage patterns.



### TECHNICAL SUPPORT

Choosing the right mixer tap and sink for your home is an important choice as the tap is not only the most architectural item in your kitchen, but also the most used.

Think about the style you require, the ease of use you are looking for, and then consider your existing water supply and the water pressure available to you. If you have any questions with regards to whether a tap will be suitable for your application, please contact our technical support team or visit our website [www.abodedesigns.co.uk](http://www.abodedesigns.co.uk) for more details.

For sinks, consider the material and colour you prefer, the uses of the sink, the number and bowl sizes, the type of worktop material you propose to use and the base unit space available to install within.

Your long-term satisfaction with the product is important to us. In the event that you require spare parts for your Abode product, please contact our technical support team or visit our web site for further technical information.

Scan to visit our YouTube channel for support videos.



### THE SMALL PRINT

Abode is a division of Norcros Group (Holdings) Limited.

Abode, Distinctly, More is Less, Aquifier, Proboil and Pronteau are registered trademarks of Abode.

Errors and omissions excepted.

Our policy is to continually improve and develop our products, and accordingly we reserve the right to amend specifications, particulars of weights, measures, prices, dimensions, finish and colour availability without prior notice.

For pricing please refer to our separate price list or company website. All prices displayed include VAT at 20% and are the manufacturers' recommended prices only.

**August 2022**

#### Abode would like to thank:

Second Nature Kitchens, Daval Furniture, CRL Stone (with photography by Paul Craig), Home Design HQ, Janus Interiors, Kings Kitchens, Leicht Contracts, Stag Kitchens and @newbuildtohome for the use of their beautiful products in the photography used in this brochure.

#### Design:

Stephanie Masters  
0747 500 1066

#### Photography:

Iain Klieve Photographer  
07391 039 289

View the full suite of Abode literature at [www.abodedesigns.co.uk](http://www.abodedesigns.co.uk)

abode

Zenith Park,  
Whaley Road,  
Barnsley,  
South Yorkshire  
S75 1HT  
Tel: 01226 283434  
[www.abodedesigns.co.uk](http://www.abodedesigns.co.uk)  
[www.pronteau.co.uk](http://www.pronteau.co.uk)



August 2022